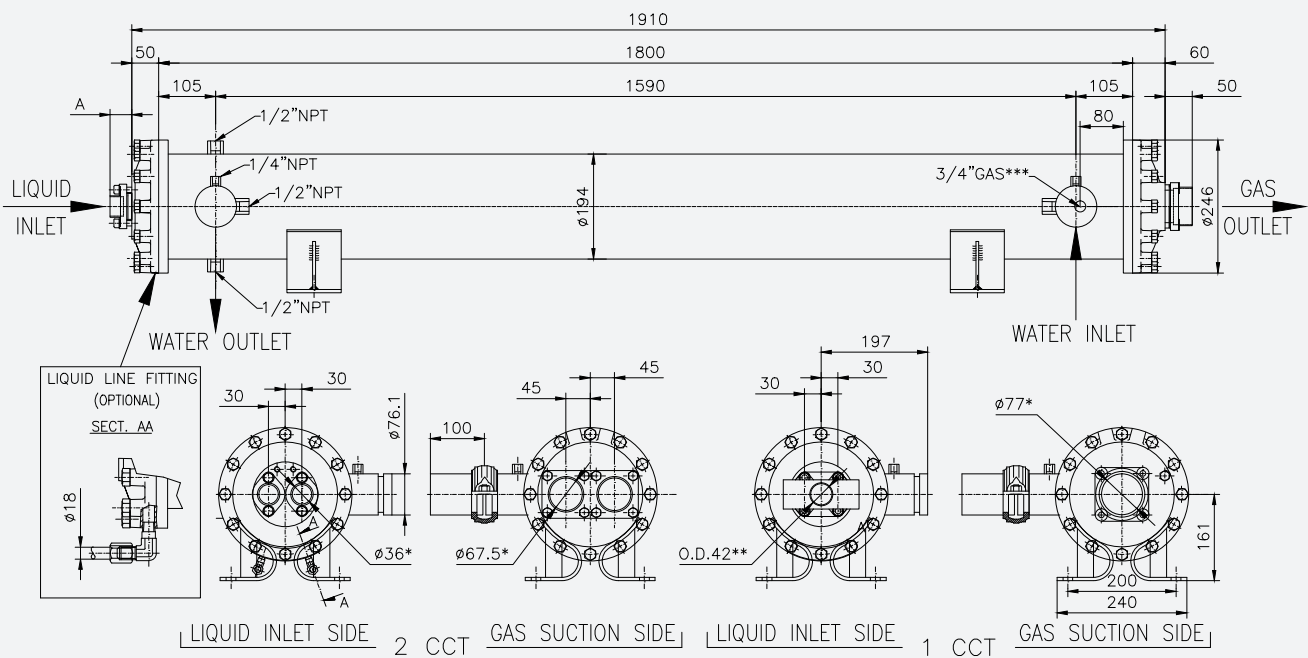


Data valid for: suction temperature 2°C with water IN/OUT = 12 / 7 °C; superheating = 4K; condensing temperature = 40°C; subcooling = 5K; water side fouling factor = 0.000016 m²K/W low viscosity (< 60 cSt) with 1% of concentration; water side pressure drop up to 150 kPa					
Model	Total capacity kW	Flow rate m³/h	Volume gas dm³	Volume H ₂ O dm³	Weight kg
1CC / 2 CCT - L = 1800 mm					
EV 19180033 N2	79	13,6	7	42	103
EV 19180044 N2	111	19,0	9	40	106
EV 19180055 N2	145	24,9	11	37	110
EV 19180066 N2	177	30,4	13	35	112

* Please contact technical dept. at PROVIDES S.r.l. for info

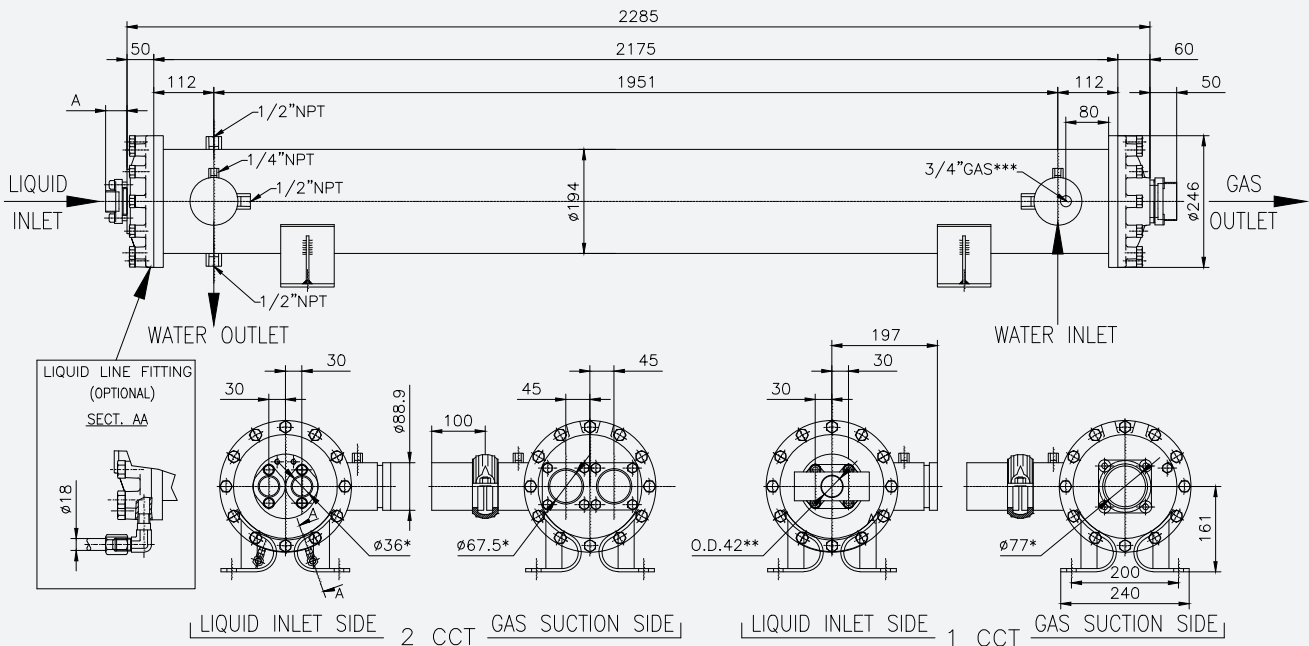


FERRULES LENGHT		
A	161	1 CCT**
	40	2 CCT

- * INTERNAL DIAMETER OF FERRULE
- ** MANIFOLD (MONO SERIES ONLY)
- *** HEAT RESISTANCE-ON THE OTHER SIDE

Data valid for: suction temperature 2°C with water IN/OUT = 12 / 7 °C; superheating = 4K; condensing temperature = 40°C; subcooling = 5K; water side fouling factor = 0.000016 m ² K/W low viscosity (< 60 cSt) with 1% of concentration; water side pressure drop up to 150 kPa					
Model	Total capacity kW	Flow rate m ³ /h	Volume gas dm ³	Volume H ₂ O dm ³	Weight kg
1CC / 2 CCT - L = 2175 mm					
EV 19210033 N2	102	17,5	8	51	113
EV 19210044 N2	139	23,9	10	48	117
EV 19210055 N2	180	30,8	13	45	121
EV 19210066 N2	217	37,3	15	43	124

* Please contact technical dept. at PROVIDES S.r.l. for info

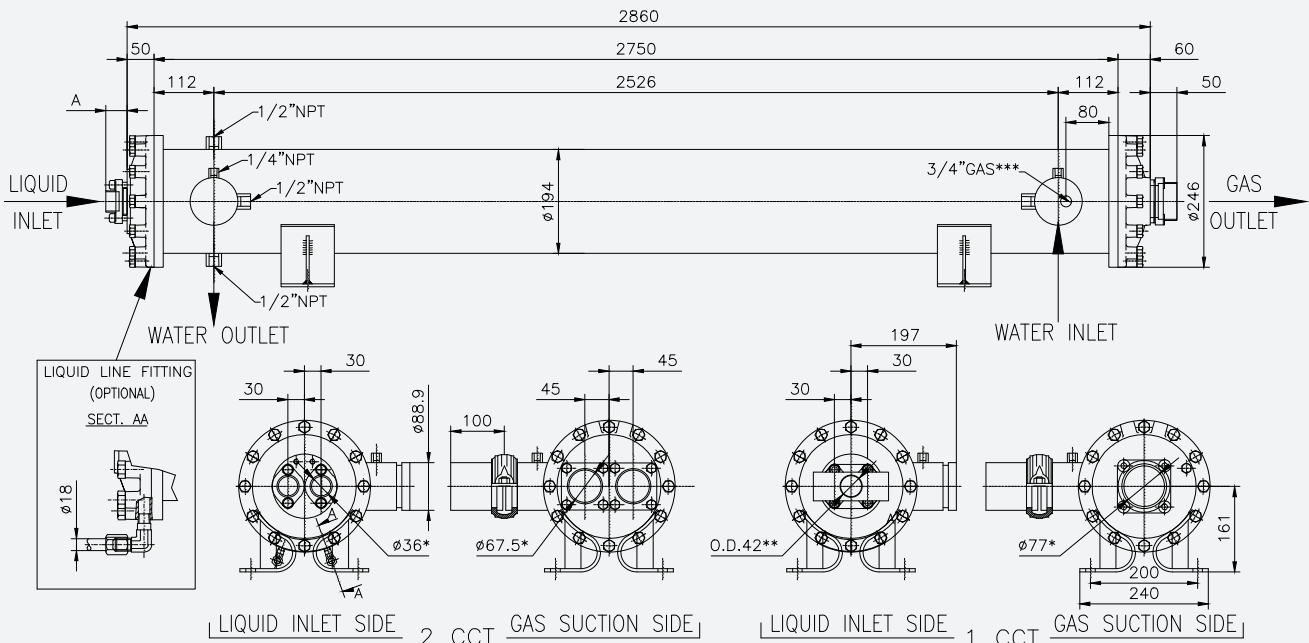


FERRULES LENGHT		
A	161	1 CCT**
	40	2 CCT

- * INTERNAL DIAMETER OF FERRULE
- ** MANIFOLD (MONO SERIES ONLY)
- *** HEAT RESISTANCE—ON THE OTHER SIDE

Data valid for: suction temperature 2°C with water IN/OUT = 12 / 7 °C; superheating = 4K; condensing temperature = 40°C; subcooling = 5K; water side fouling factor = 0.000016 m ² K/W low viscosity (< 60 cSt) with 1% of concentration; water side pressure drop up to 150 kPa					
Model	Total capacity kW	Flow rate m ³ /h	Volume gas dm ³	Volume H ₂ O dm ³	Weight kg
1CC / 2 CCT - L = 2750 mm					
EV 19270033 N2	125	21,4	10	64	133
EV 19270044 N2	169	29,0	13	61	138
EV 19270055 N2	217	37,3	16	57	143
EV 19270066 N2	261	44,9	19	54	146

* Please contact technical dept. at PROVIDES S.r.l. for info

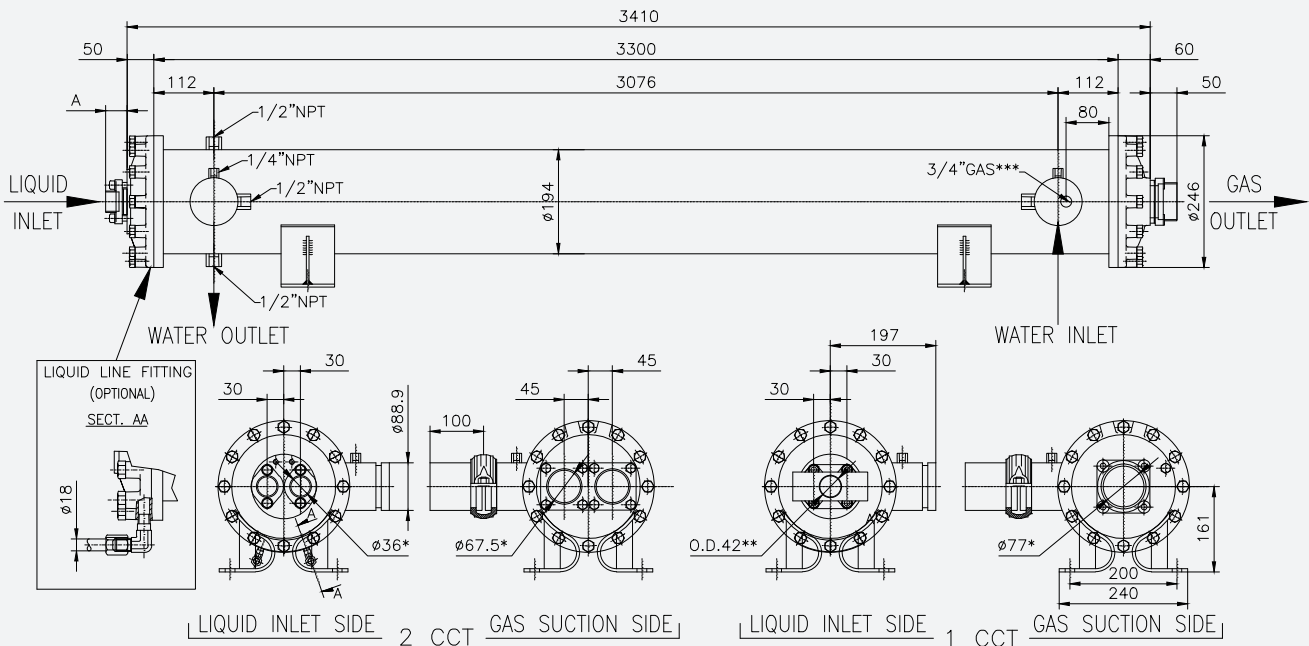


FERRULES LENGTH		
A	161	1 CCT**
	40	2 CCT

* INTERNAL DIAMETER OF FERRULE
 ** MANIFOLD (MONO SERIES ONLY)
 *** HEAT RESISTANCE-ON THE OTHER SIDE

Data valid for: suction temperature 2°C with water IN/OUT = 12 / 7 °C; superheating = 4K; condensing temperature = 40°C; subcooling = 5K; water side fouling factor = 0.000016 m ² K/W low viscosity (< 60 cSt) with 1% of concentration; water side pressure drop up to 150 kPa					
Model	Total capacity kW	Flow rate m ³ /h	Volume gas dm ³	Volume H ₂ O dm ³	Weight kg
1CC / 2 CCT - L = 3300 mm					
EV 19330033 N2	*	*	12	77	148
EV 19330044 N2	*	*	15	73	154
EV 19330055 N2	*	*	19	69	160
EV 19330066 N2	*	*	22	65	164

* Please contact technical dept. at PROVIDES S.r.l. for info

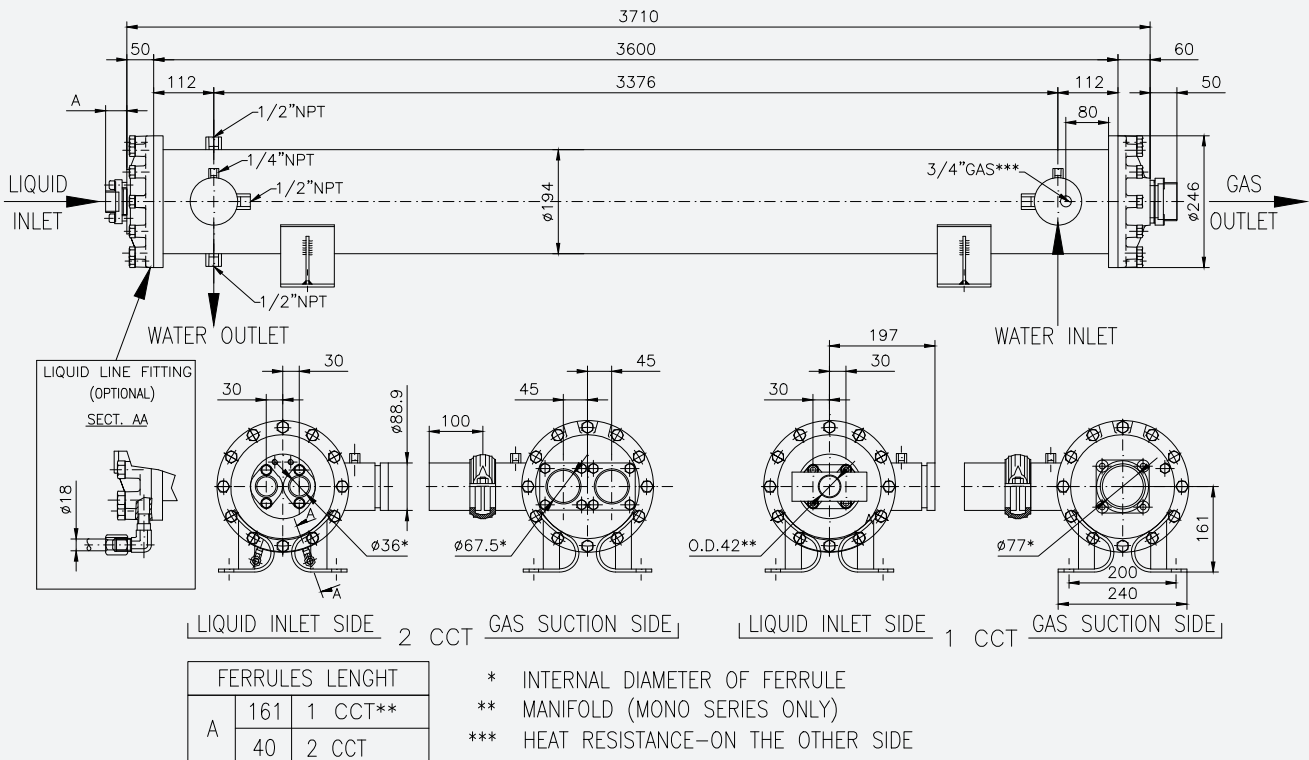


FERRULES LENGTH		
A	161	1 CCT**
	40	2 CCT

- * INTERNAL DIAMETER OF FERRULE
- ** MANIFOLD (MONO SERIES ONLY)
- *** HEAT RESISTANCE-ON THE OTHER SIDE

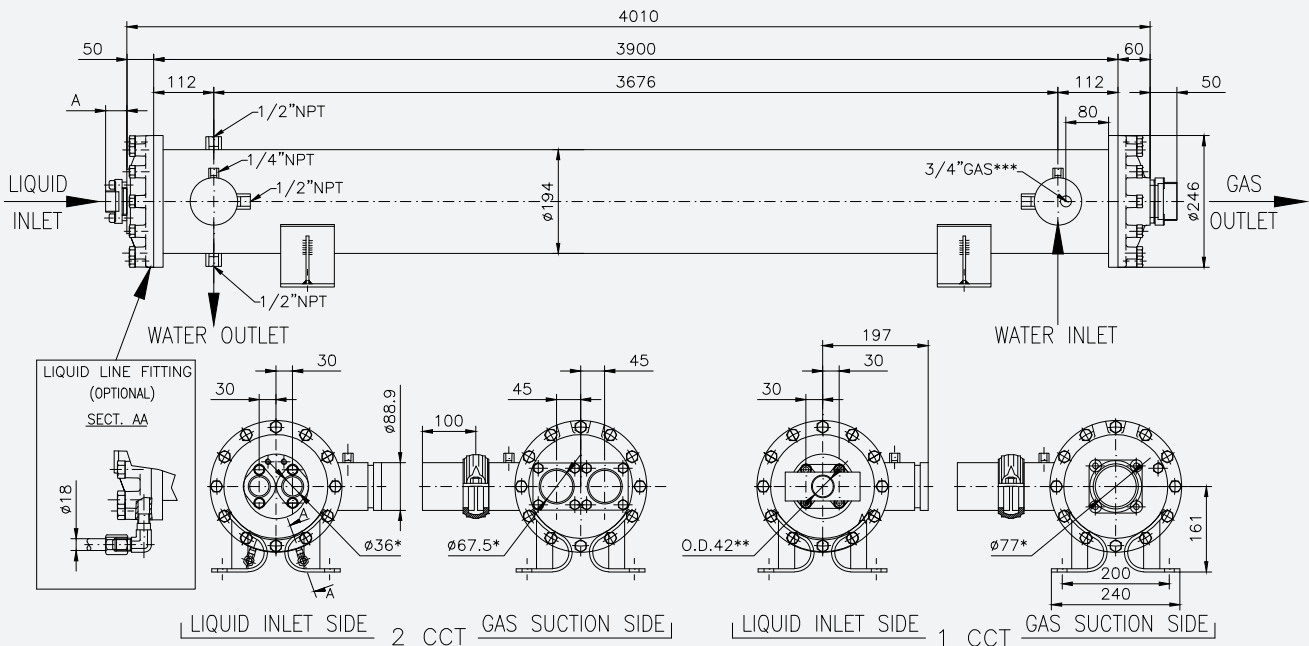
Data valid for: suction temperature 2°C with water IN/OUT = 12 / 7 °C; superheating = 4K; condensing temperature = 40°C; subcooling = 5K; water side fouling factor = 0.000016 m ² K/W low viscosity (< 60 cSt) with 1% of concentration; water side pressure drop up to 150 kPa					
Model	Total capacity kW	Flow rate m ³ /h	Volume gas dm ³	Volume H ₂ O dm ³	Weight kg
1CC / 2 CCT - L = 3600 mm					
EV 19360033 N2	*	*	13	84	156
EV 19360044 N2	*	*	16	80	162
EV 19360055 N2	*	*	20	75	169
EV 19360066 N2	*	*	24	71	173

* Please contact technical dept. at PROVIDES S.r.l. for info



Data valid for: suction temperature 2°C with water IN/OUT = 12 / 7 °C; superheating = 4K; condensing temperature = 40°C; subcooling = 5K; water side fouling factor = 0.000016 m²K/W low viscosity (< 60 cSt) with 1% of concentration; water side pressure drop up to 150 kPa					
Model	Total capacity kW	Flow rate m³/h	Volume gas dm³	Volume H ₂ O dm³	Weight kg
1CC / 2 CCT - L = 3900 mm					
EV 19390033 N2	*	*	14	91	163
EV 19390044 N2	*	*	18	86	170
EV 19390055 N2	*	*	22	81	177
EV 19390066 N2	*	*	26	77	182

* Please contact technical dept. at PROVIDES S.r.l. for info

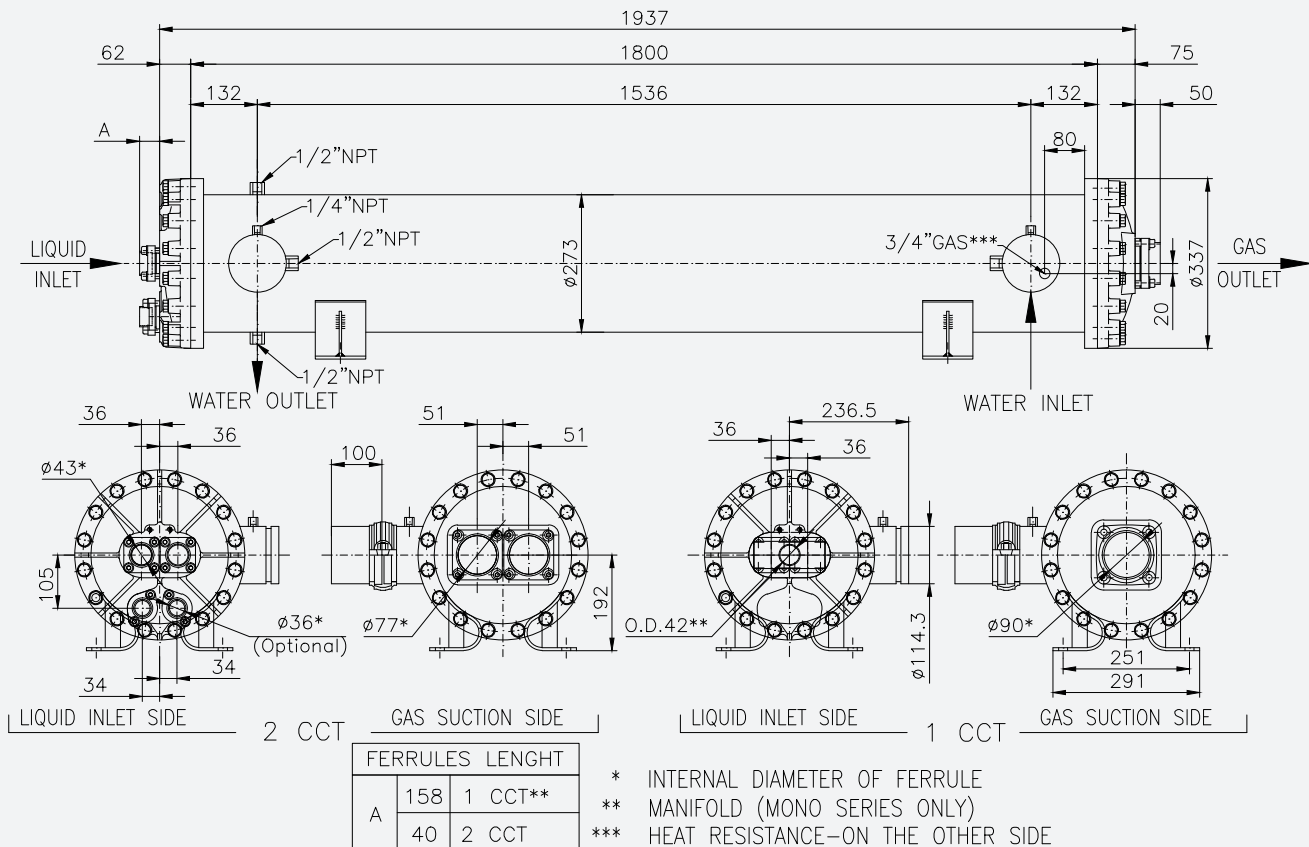


FERRULES LENGTH		
A	161	1 CCT**
	40	2 CCT

- * INTERNAL DIAMETER OF FERRULE
- ** MANIFOLD (MONO SERIES ONLY)
- *** HEAT RESISTANCE-ON THE OTHER SIDE

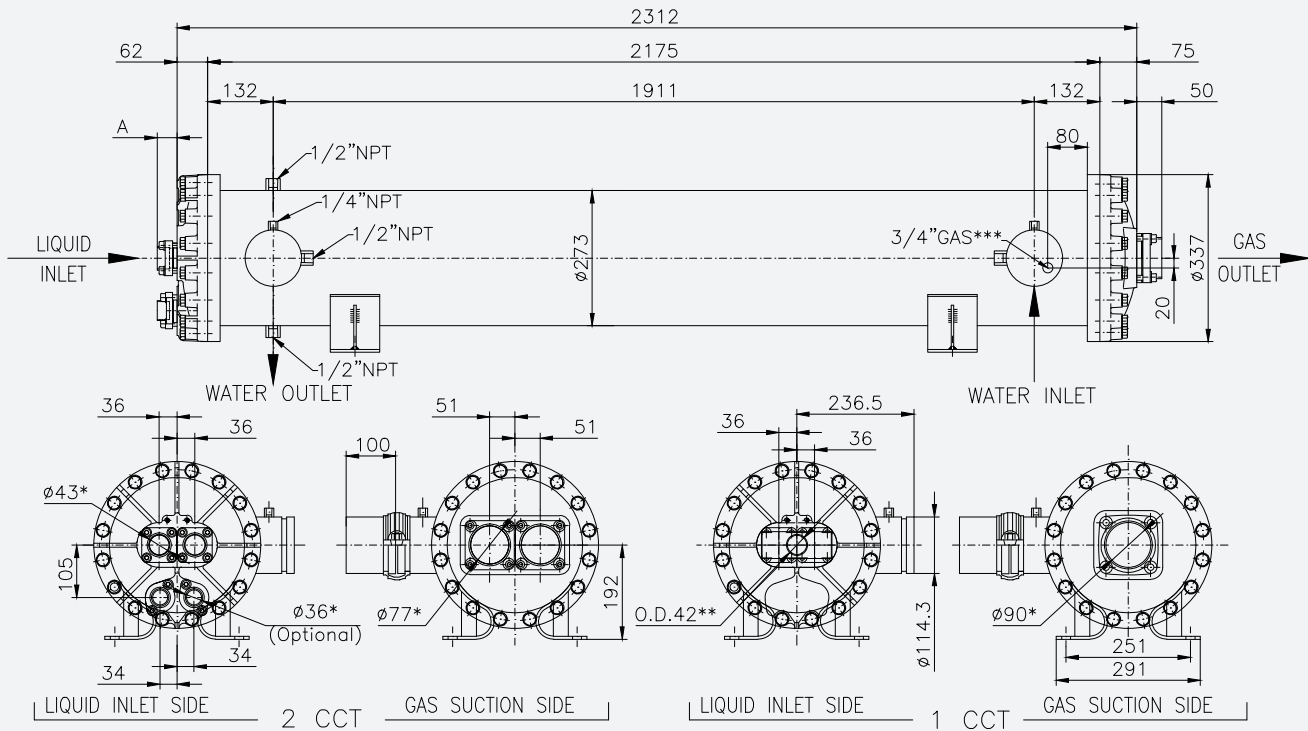
Data valid for: suction temperature 2°C with water IN/OUT = 12 / 7 °C; superheating = 4K; condensing temperature = 40°C; subcooling = 5K; water side fouling factor = 0.000016 m²K/W low viscosity (< 60 cSt) with 1% of concentration; water side pressure drop up to 150 kPa					
Model	Total capacity kW	Flow rate m³/h	Volume gas dm³	Volume H ₂ O dm³	Weight kg
1CC / 2 CCT - L = 1800 mm					
EV 27180044 N2	171	29,4	15	83	209
EV 27180055 N2	221	38,0	18	80	213
EV 27180066 N2	269	46,1	20	77	217
EV 27180077 N2	319	54,7	23	73	220
EV 27180088 N2	366	62,8	26	70	223

* Please contact technical dept. at PROVIDES S.r.l. for info



Data valid for: suction temperature 2°C with water IN/OUT = 12 / 7 °C; superheating = 4K; condensing temperature = 40°C; subcooling = 5K; water side fouling factor = 0.000016 m ² K/W low viscosity (< 60 cSt) with 1% of concentration; water side pressure drop up to 150 kPa					
Model	Total capacity kW	Flow rate m ³ /h	Volume gas dm ³	Volume H ₂ O dm ³	Weight kg
1CC / 2 CCT - L = 2175 mm					
EV 27210044 N2	212	36,4	17	101	224
EV 27210055 N2	264	45,4	21	97	230
EV 27210066 N2	314	53,9	24	93	237
EV 27210077 N2	366	62,9	27	89	241
EV 27210088 N2	416	71,4	31	85	248

* Please contact technical dept. at PROVIDES S.r.l. for info

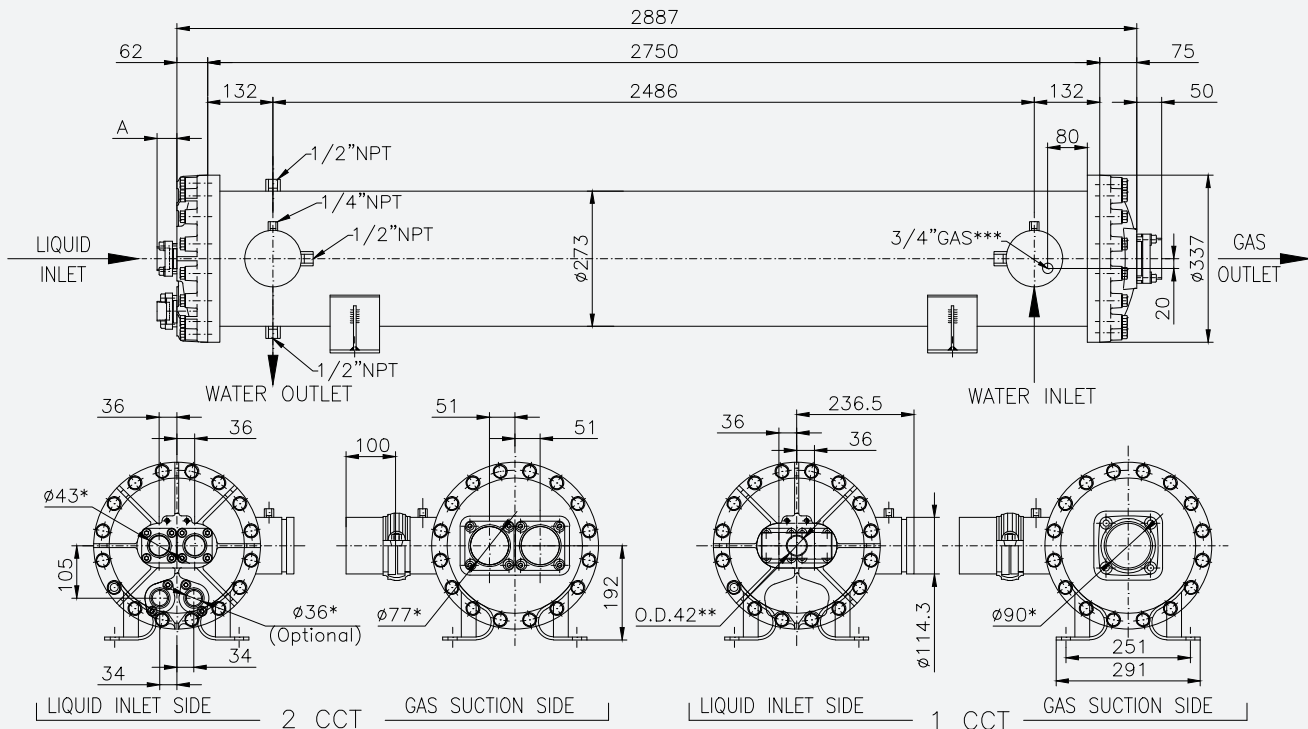


FERRULES LENGTH		
A	158	1 CCT**
	40	2 CCT

* INTERNAL DIAMETER OF FERRULE
 ** MANIFOLD (MONO SERIES ONLY)
 *** HEAT RESISTANCE-ON THE OTHER SIDE

Data valid for: suction temperature 2°C with water IN/OUT = 12 / 7 °C; superheating = 4K; condensing temperature = 40°C; subcooling = 5K; water side fouling factor = 0.000016 m²K/W low viscosity (< 60 cSt) with 1% of concentration; water side pressure drop up to 150 kPa					
Model	Total capacity kW	Flow rate m³/h	Volume gas dm³	Volume H ₂ O dm³	Weight kg
1CC / 2 CCT - L = 2750 mm					
EV 27270044 N2	256	44,0	21	128	260
EV 27270055 N2	324	55,6	25	123	266
EV 27270066 N2	387	66,5	29	118	273
EV 27270077 N2	455	78,1	34	113	279
EV 27270088 N2	519	89,0	38	108	286

* Please contact technical dept. at PROVIDES S.r.l. for info

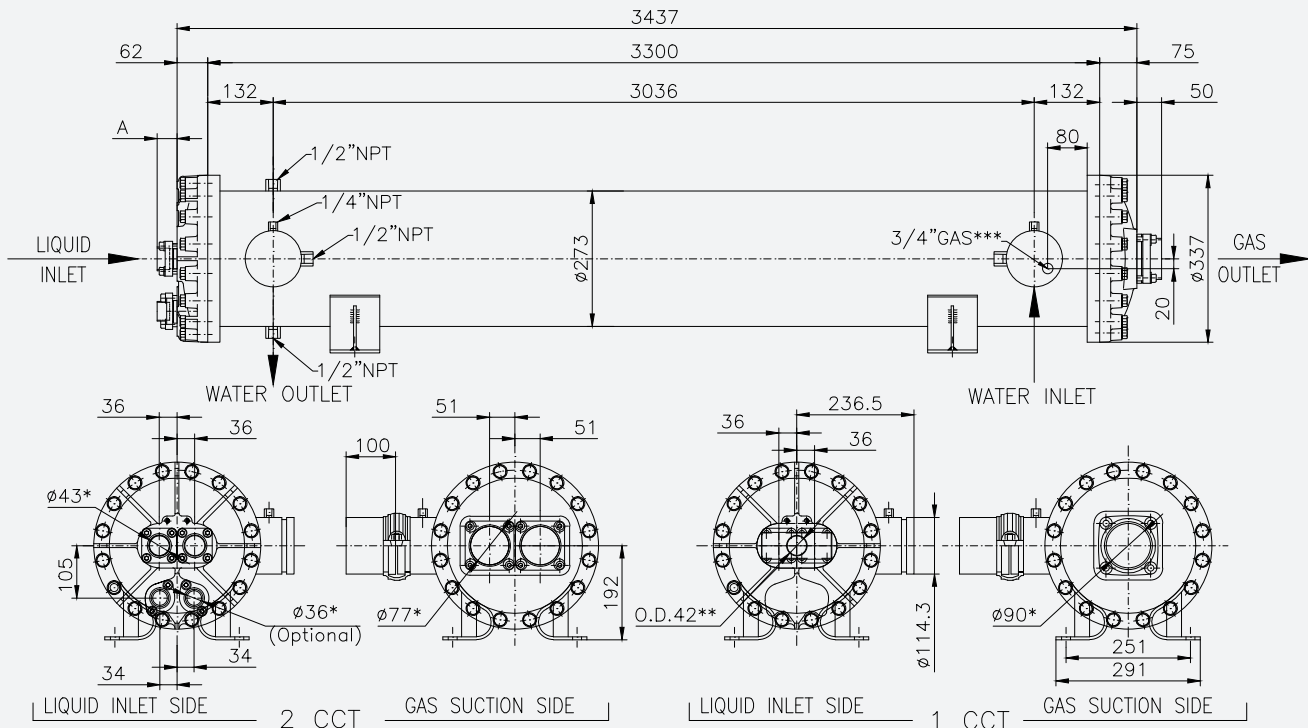


FERRULES LENGTH		
A	158	1 CCT**
	40	2 CCT

* INTERNAL DIAMETER OF FERRULE
 ** MANIFOLD (MONO SERIES ONLY)
 *** HEAT RESISTANCE-ON THE OTHER SIDE

Data valid for: suction temperature 2°C with water IN/OUT = 12 / 7 °C; superheating = 4K; condensing temperature = 40°C; subcooling = 5K; water side fouling factor = 0.000016 m²K/W low viscosity (< 60 cSt) with 1% of concentration; water side pressure drop up to 150 kPa					
Model	Total capacity kW	Flow rate m³/h	Volume gas dm³	Volume H ₂ O dm³	Weight kg
1CC / 2 CCT - L = 3300 mm					
EV 27330044 N2	259	44,5	24	154	284
EV 27330055 N2	330	56,7	29	148	291
EV 27330066 N2	397	68,2	34	142	300
EV 27330077 N2	468	80,4	40	135	307
EV 27330088 N2	536	91,9	45	130	315

* Please contact technical dept. at PROVIDES S.r.l. for info

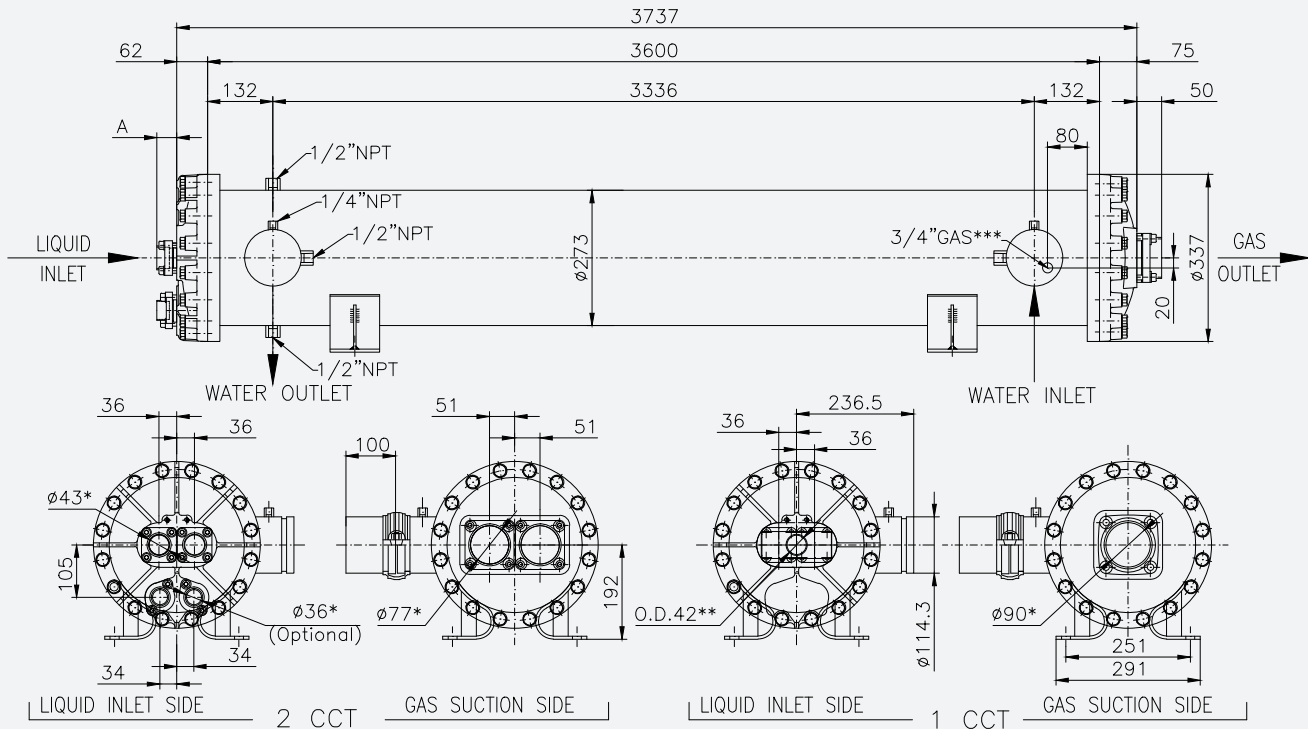


FERRULES LENGTH		
A	158	1 CCT**
	40	2 CCT

* INTERNAL DIAMETER OF FERRULE
 ** MANIFOLD (MONO SERIES ONLY)
 *** HEAT RESISTANCE-ON THE OTHER SIDE

Data valid for: suction temperature 2°C with water IN/OUT = 12 / 7 °C; superheating = 4K; condensing temperature = 40°C; subcooling = 5K; water side fouling factor = 0.000016 m ² K/W low viscosity (< 60 cSt) with 1% of concentration; water side pressure drop up to 150 kPa					
Model	Total capacity kW	Flow rate m ³ /h	Volume gas dm ³	Volume H ₂ O dm ³	Weight kg
1CC / 2 CCT - L = 3600 mm					
EV 27360044 N2	*	*	26	168	298
EV 27360055 N2	*	*	32	161	305
EV 27360066 N2	*	*	37	155	315
EV 27360077 N2	*	*	43	148	324
EV 27360088 N2	*	*	49	142	332

* Please contact technical dept. at PROVIDES S.r.l. for info

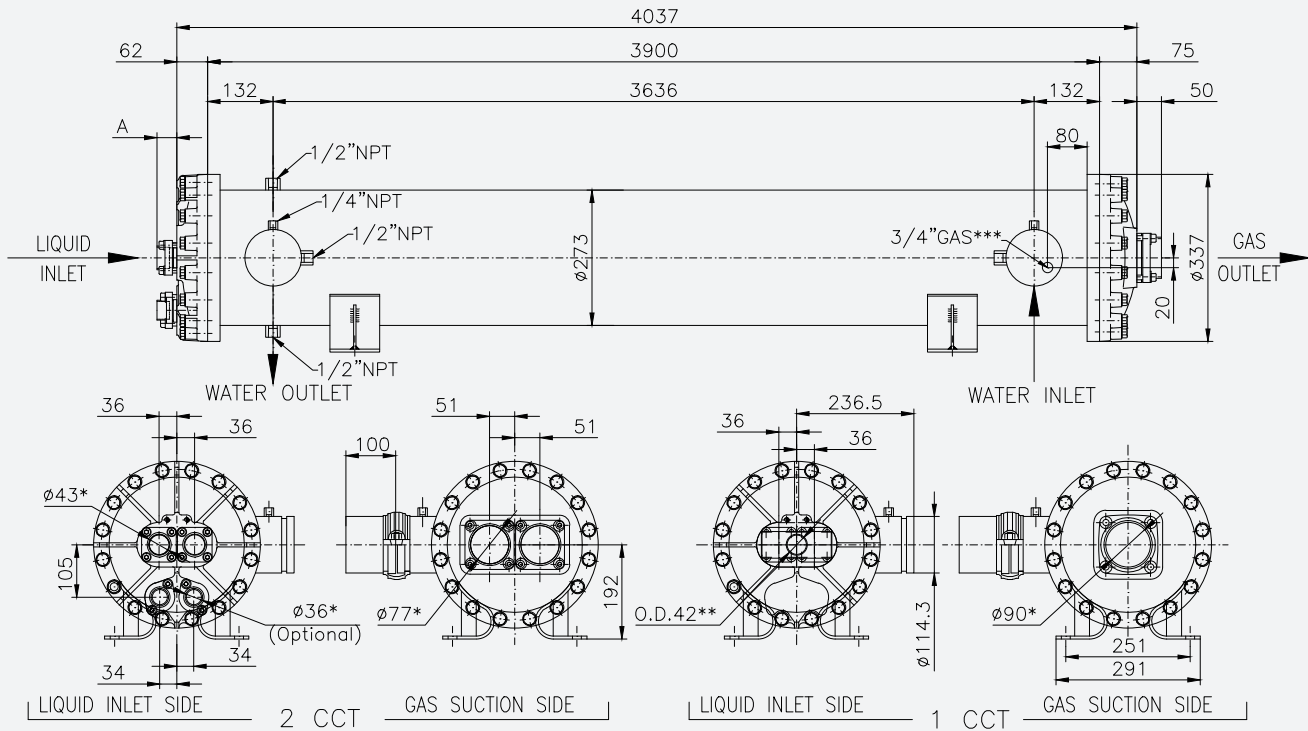


FERRULES LENGTH		
A	158	1 CCT**
	40	2 CCT

* INTERNAL DIAMETER OF FERRULE
 ** MANIFOLD (MONO SERIES ONLY)
 *** HEAT RESISTANCE—ON THE OTHER SIDE

Data valid for: suction temperature 2°C with water IN/OUT = 12 / 7 °C; superheating = 4K; condensing temperature = 40°C; subcooling = 5K; water side fouling factor = 0.000016 m ² K/W low viscosity (< 60 cSt) with 1% of concentration; water side pressure drop up to 150 kPa					
Model	Total capacity kW	Flow rate m ³ /h	Volume gas dm ³	Volume H ₂ O dm ³	Weight kg
1CC / 2 CCT - L = 3900 mm					
EV 27390044 N2	*	*	28	182	311
EV 27390055 N2	*	*	34	175	319
EV 27390066 N2	*	*	40	168	330
EV 27390077 N2	*	*	46	160	339
EV 27390088 N2	*	*	52	153	349

* Please contact technical dept. at PROVIDES S.r.l. for info

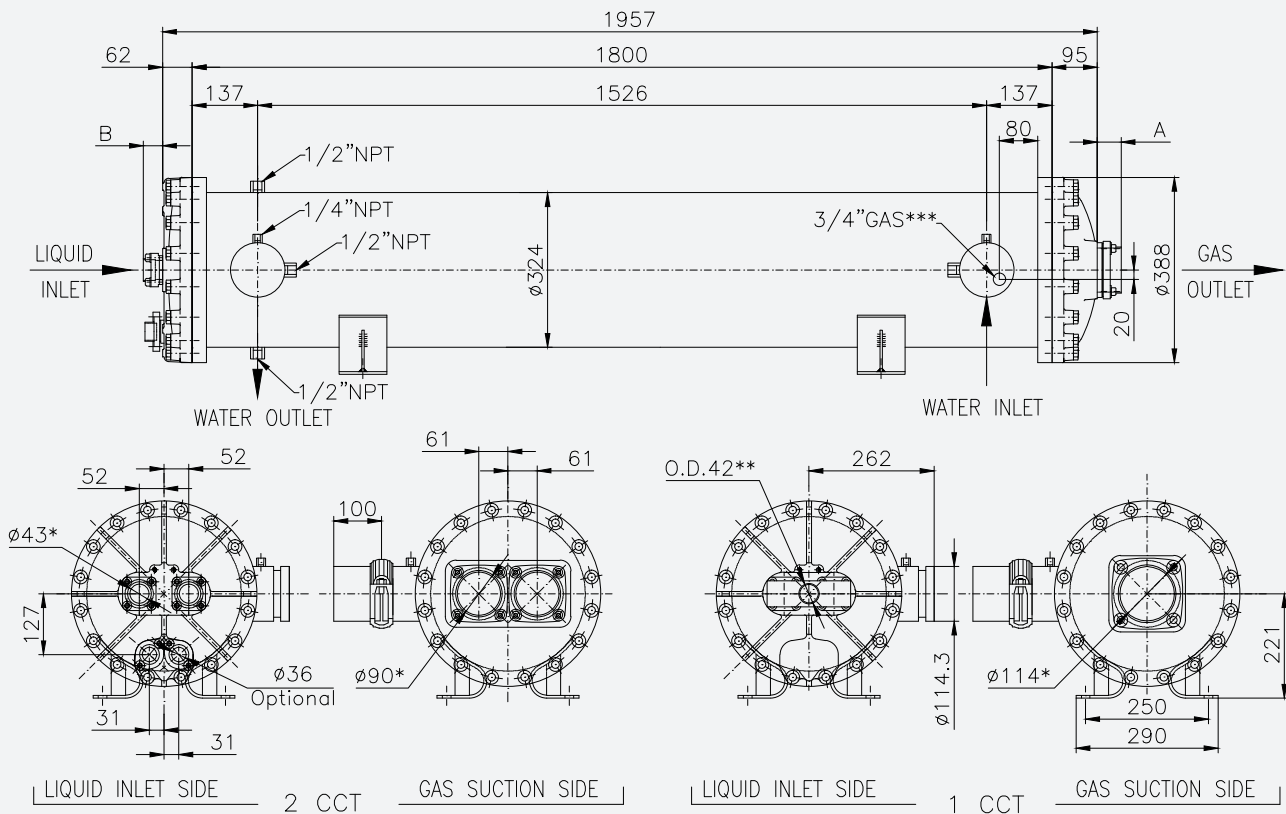


FERRULES LENGHT	
A	158 1 CCT**
	40 2 CCT

* INTERNAL DIAMETER OF FERRULE
 ** MANIFOLD (MONO SERIES ONLY)
 *** HEAT RESISTANCE-ON THE OTHER SIDE

Data valid for: suction temperature 2°C with water IN/OUT = 12 / 7 °C; superheating = 4K; condensing temperature = 40°C; subcooling = 5K; water side fouling factor = 0.000016 m ² K/W low viscosity (< 60 cSt) with 1% of concentration; water side pressure drop up to 150 kPa					
Model	Total capacity kW	Flow rate m ³ /h	Volume gas dm ³	Volume H ₂ O dm ³	Weight kg
1CC / 2 CCT - L = 1800 mm					
EV 32180055 N2	230	39,5	22	117	268
EV 32180066 N2	287	49,3	26	113	274
EV 32180077 N2	341	58,6	29	109	277
EV 32180088 N2	399	68,4	32	105	281
EV 32180099 N2	453	77,8	35	102	286
EV 32181010 N2	510	87,6	39	98	292

* Please contact technical dept. at PROVIDES S.r.l. for info

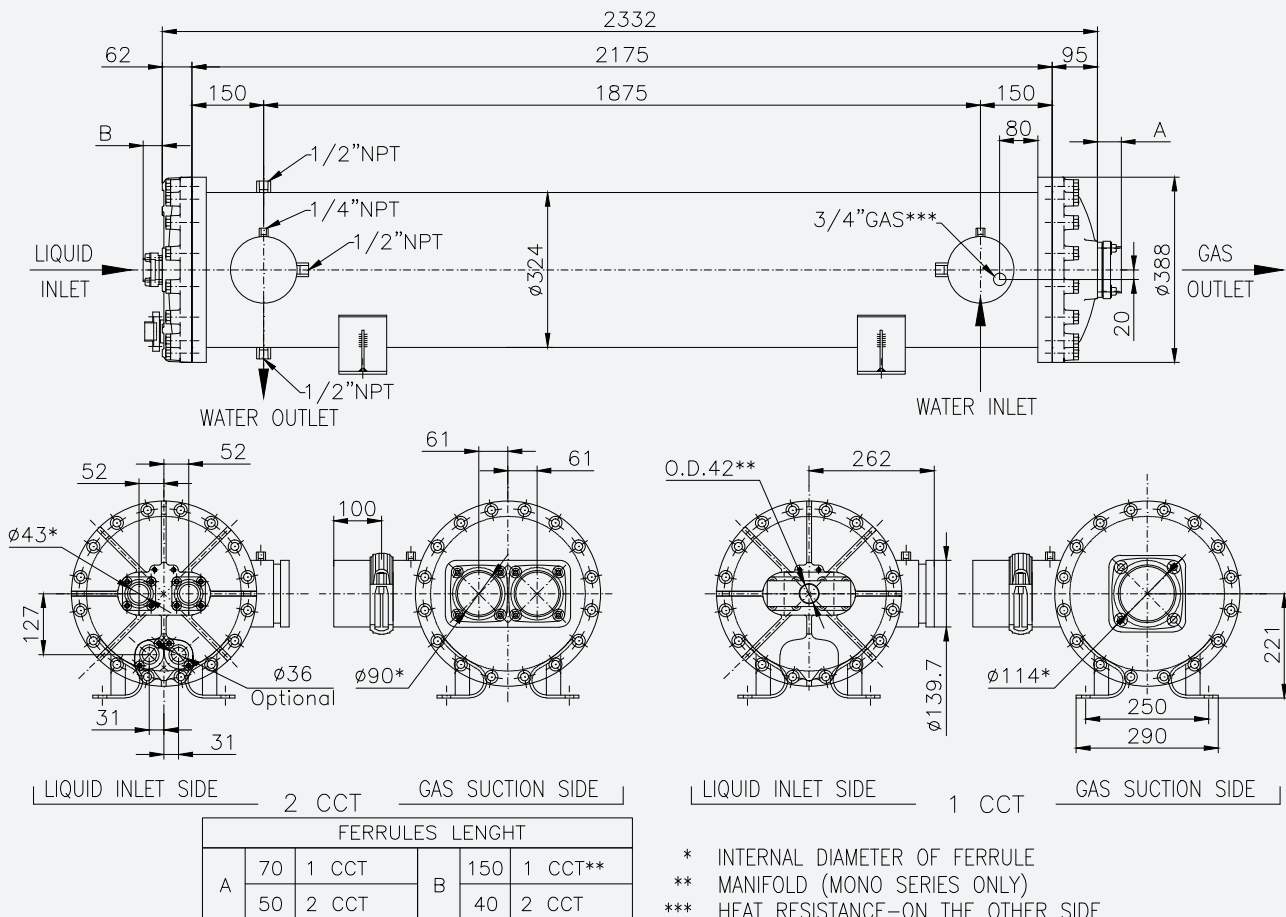


FERRULES LENGTH				
A	70	1 CCT	B	
	50	2 CCT		
			150	1 CCT**
			40	2 CCT

* INTERNAL DIAMETER OF FERRULE
** MANIFOLD (MONO SERIES ONLY)
*** HEAT RESISTANCE—ON THE OTHER SIDE

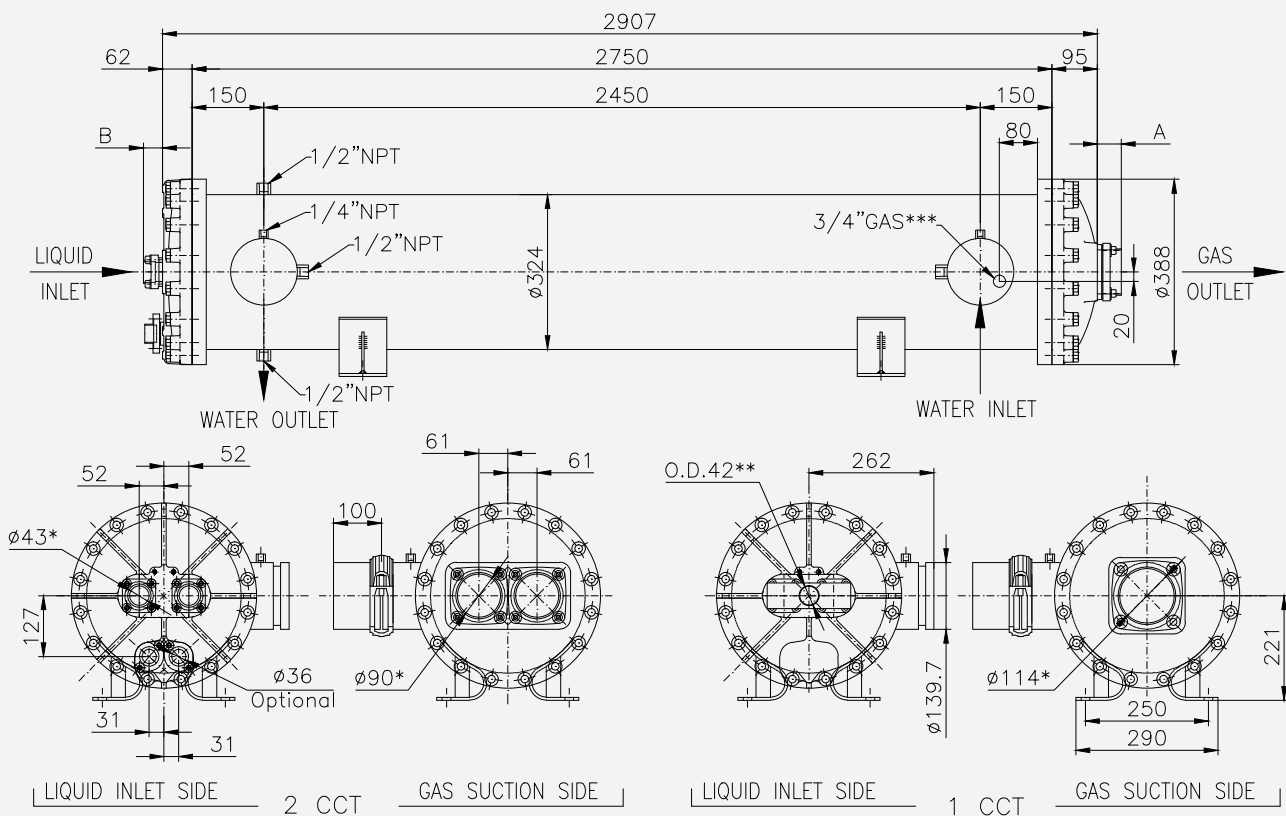
Data valid for: suction temperature 2°C with water IN/OUT = 12 / 7 °C; superheating = 4K; condensing temperature = 40°C; subcooling = 5K; water side fouling factor = 0.000016 m ² K/W low viscosity (< 60 cSt) with 1% of concentration; water side pressure drop up to 150 kPa					
Model	Total capacity kW	Flow rate m ³ /h	Volume gas dm ³	Volume H ₂ O dm ³	Weight kg
1CC / 2 CCT - L = 2175 mm					
EV 32210055 N2	288	49,4	25	143	288
EV 32210066 N2	348	59,7	30	138	295
EV 32210077 N2	405	69,5	33	134	300
EV 32210088 N2	465	79,8	38	129	305
EV 32210099 N2	522	89,6	41	124	311
EV 32211010 N2	582	99,9	46	120	319

* Please contact technical dept. at PROVIDES S.r.l. for info



Data valid for: suction temperature 2°C with water IN/OUT = 12 / 7 °C; superheating = 4K; condensing temperature = 40°C; subcooling = 5K; water side fouling factor = 0.000016 m ² K/W low viscosity (< 60 cSt) with 1% of concentration; water side pressure drop up to 150 kPa					
Model	Total capacity kW	Flow rate m ³ /h	Volume gas dm ³	Volume H ₂ O dm ³	Weight kg
1CC / 2 CCT - L = 2750 mm					
EV 32270055 N2	370	63,6	31	181	331
EV 32270066 N2	450	77,2	36	175	339
EV 32270077 N2	526	90,3	41	170	347
EV 32270088 N2	606	104,0	46	164	353
EV 32270099 N2	682	117,1	51	158	360
EV 32271010 N2	762	130,8	56	152	366

* Please contact technical dept. at PROVIDES S.r.l. for info

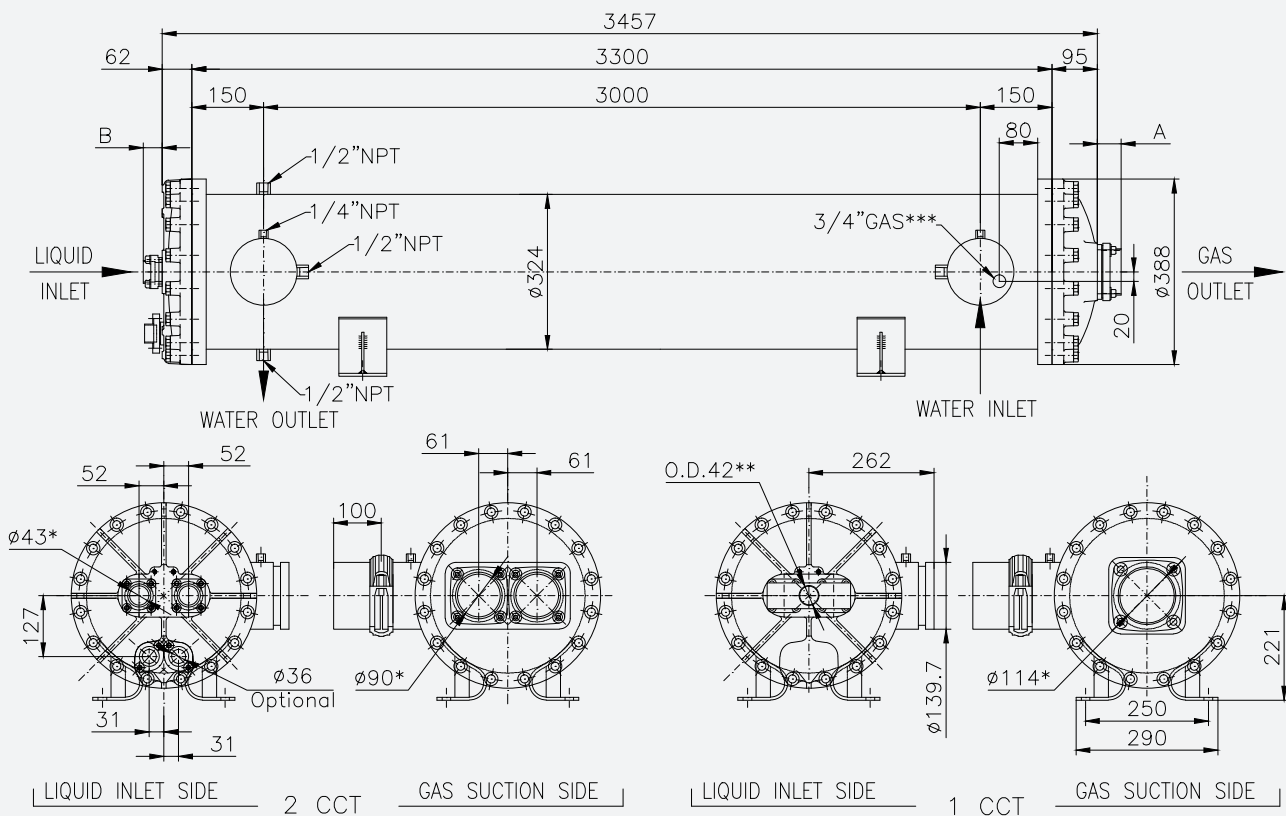


FERRULES LENGTH					
A	70	1 CCT	B	150	1 CCT**
	50	2 CCT		40	2 CCT

* INTERNAL DIAMETER OF FERRULE
 ** MANIFOLD (MONO SERIES ONLY)
 *** HEAT RESISTANCE-ON THE OTHER SIDE

Data valid for: suction temperature 2°C with water IN/OUT = 12 / 7 °C; superheating = 4K; condensing temperature = 40°C; subcooling = 5K; water side fouling factor = 0.000016 m ² K/W low viscosity (< 60 cSt) with 1% of concentration; water side pressure drop up to 150 kPa					
Model	Total capacity kW	Flow rate m ³ /h	Volume gas dm ³	Volume H ₂ O dm ³	Weight kg
1CC / 2 CCT - L = 3300 mm					
EV 32330055 N2	377	64,7	35	218	362
EV 32330066 N2	460	79,0	42	211	372
EV 32330077 N2	540	92,7	48	204	382
EV 32330088 N2	623	107,0	54	197	389
EV 32330099 N2	703	120,6	60	190	398
EV 32331010 N2	786	135,0	66	183	405

* Please contact technical dept. at PROVIDES S.r.l. for info

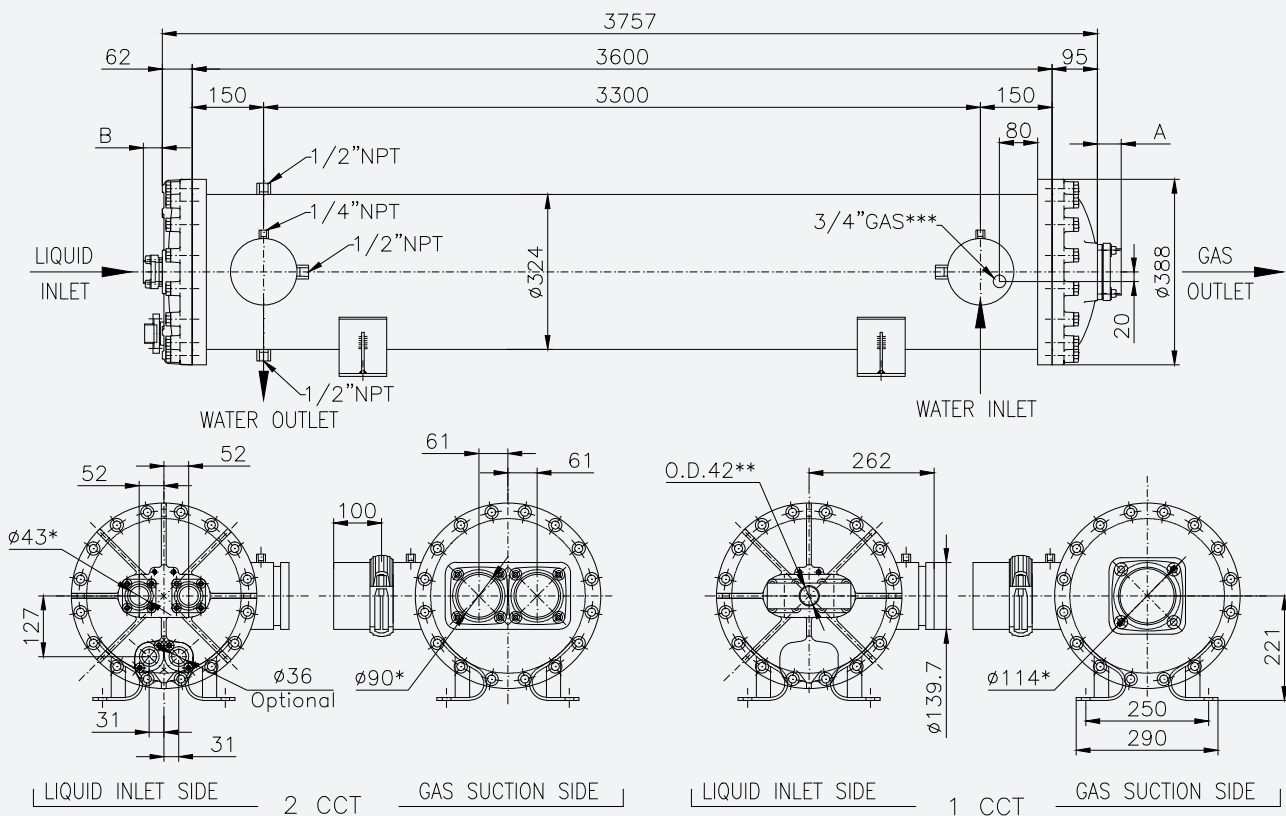


FERRULES LENGTH					
A	70	1 CCT	B	150	1 CCT**
	50	2 CCT		40	2 CCT

* INTERNAL DIAMETER OF FERRULE
 ** MANIFOLD (MONO SERIES ONLY)
 *** HEAT RESISTANCE-ON THE OTHER SIDE

Data valid for: suction temperature 2°C with water IN/OUT = 12 / 7 °C; superheating = 4K; condensing temperature = 40°C; subcooling = 5K; water side fouling factor = 0.000016 m ² K/W low viscosity (< 60 cSt) with 1% of concentration; water side pressure drop up to 150 kPa					
Model	Total capacity kW	Flow rate m ³ /h	Volume gas dm ³	Volume H ₂ O dm ³	Weight kg
1CC / 2 CCT - L = 3600 mm					
EV 32360055 N2	*	*	38	238	379
EV 32360066 N2	*	*	45	230	389
EV 32360077 N2	*	*	51	223	400
EV 32360088 N2	*	*	58	215	408
EV 32360099 N2	*	*	65	208	418
EV 32361010 N2	*	*	71	200	426

* Please contact technical dept. at PROVIDES S.r.l. for info

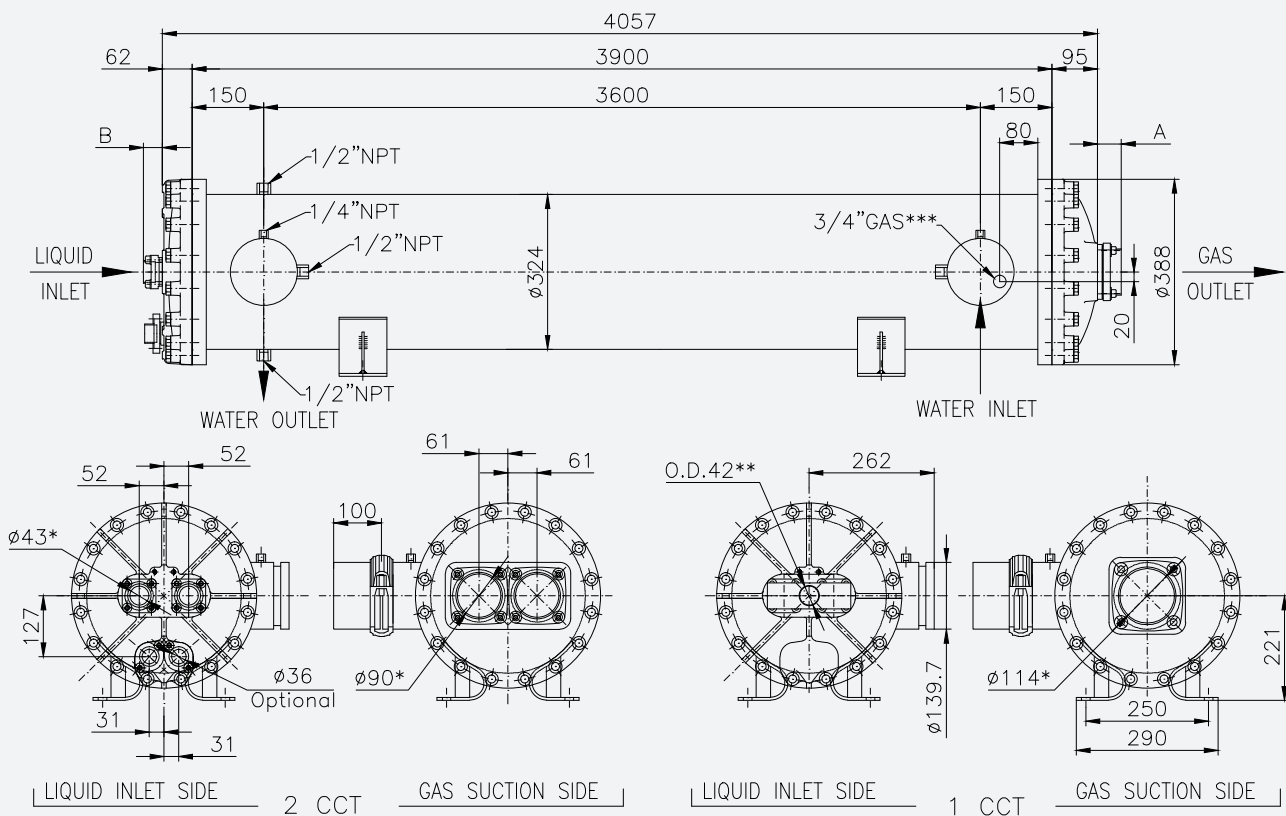


FERRULES LENGTH			
A	70	1 CCT	B
	50	2 CCT	
			150
			40

* INTERNAL DIAMETER OF FERRULE
 ** MANIFOLD (MONO SERIES ONLY)
 *** HEAT RESISTANCE-ON THE OTHER SIDE

Data valid for: suction temperature 2°C with water IN/OUT = 12 / 7 °C; superheating = 4K; condensing temperature = 40°C; subcooling = 5K; water side fouling factor = 0.000016 m ² K/W low viscosity (< 60 cSt) with 1% of concentration; water side pressure drop up to 150 kPa					
Model	Total capacity kW	Flow rate m ³ /h	Volume gas dm ³	Volume H ₂ O dm ³	Weight kg
1CC / 2 CCT - L = 3900 mm					
EV 32390055 N2	*	*	41	258	395
EV 32390066 N2	*	*	48	250	407
EV 32390077 N2	*	*	55	242	418
EV 32390088 N2	*	*	62	233	428
EV 32390099 N2	*	*	69	225	438
EV 32391010 N2	*	*	77	217	448

* Please contact technical dept. at PROVIDES S.r.l. for info

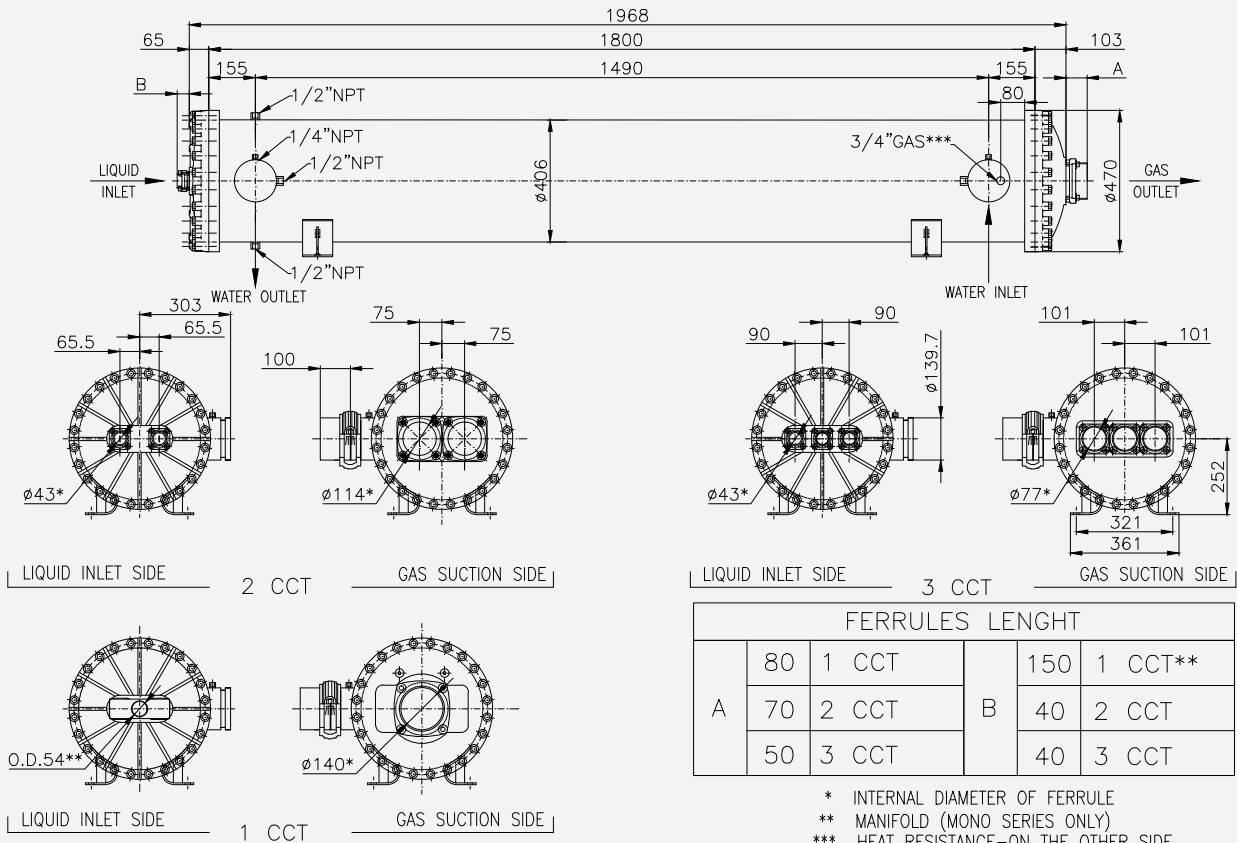


FERRULES LENGTH			
A	70	1 CCT	B
	50	2 CCT	
			150
			40

* INTERNAL DIAMETER OF FERRULE
 ** MANIFOLD (MONO SERIES ONLY)
 *** HEAT RESISTANCE-ON THE OTHER SIDE

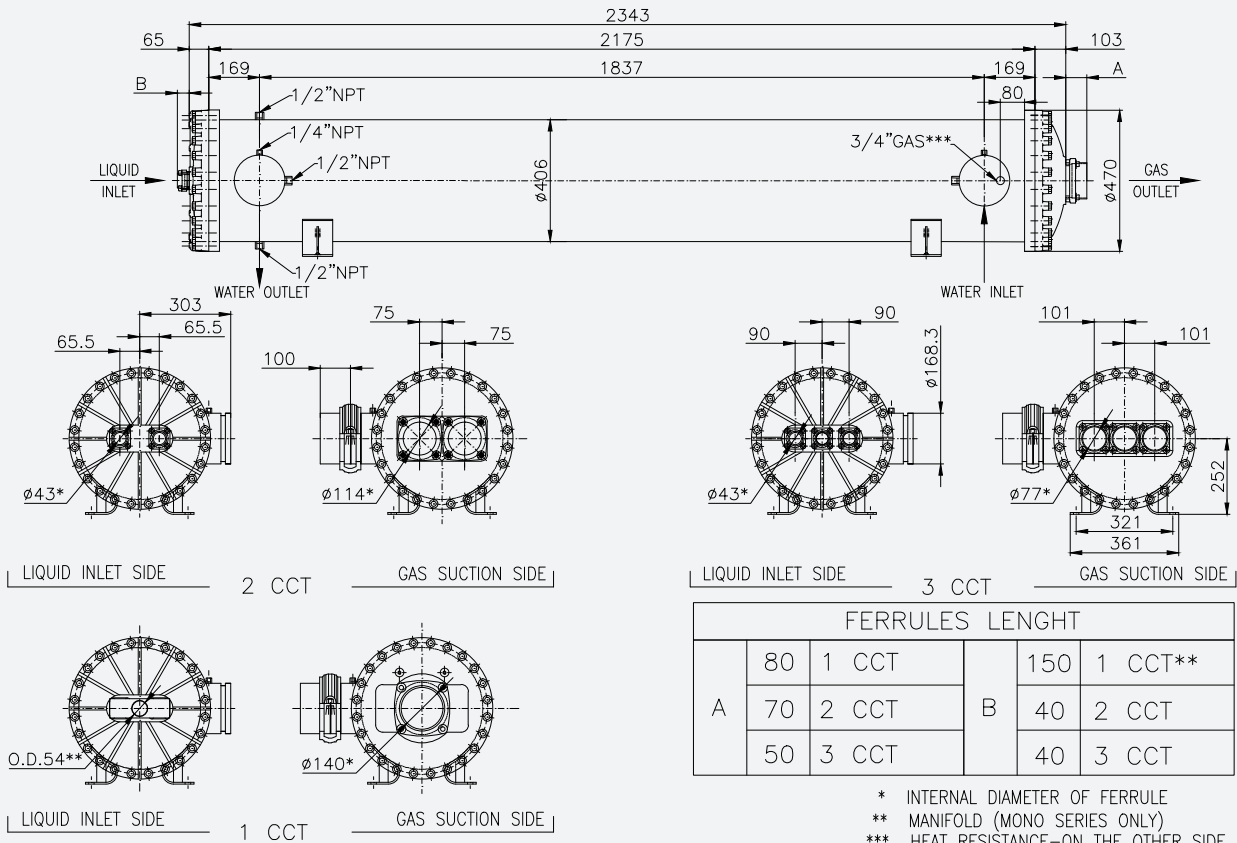
Data valid for: suction temperature 2°C with water IN/OUT = 12 / 7 °C; superheating = 4K; condensing temperature = 40°C; subcooling = 5K; water side fouling factor = 0.000016 m ² K/W low viscosity (< 60 cSt) with 1% of concentration; water side pressure drop up to 150 kPa					
Model	Total capacity kW	Flow rate m ³ /h	Volume gas dm ³	Volume H ₂ O dm ³	Weight kg
1CC/2 CCT - L= 1800 mm					
EV 40180077 N2	410	70,4	39	178	443
EV 40180088 N2	485	83,2	43	173	453
EV 40180099 N2	557	95,6	47	168	462
EV 40181010 N2	631	108,4	52	163	471
EV 40181111 N2	703	120,7	56	159	481
EV 40181212 N2	778	133,6	60	154	490
EV 40181313 N2	850	145,9	64	149	498
3 CCT - L= 1800mm					
EV 40180444 N2	357	61,3	35	183	430
EV 40180555 N2	441	75,7	41	176	438
EV 40180666 N2	536	92,0	48	168	446
EV 40180777 N2	620	106,4	54	161	453
EV 40180888 N2	708	121,5	60	154	460

* Please contact technical dept. at PROVIDES S.r.l. for info



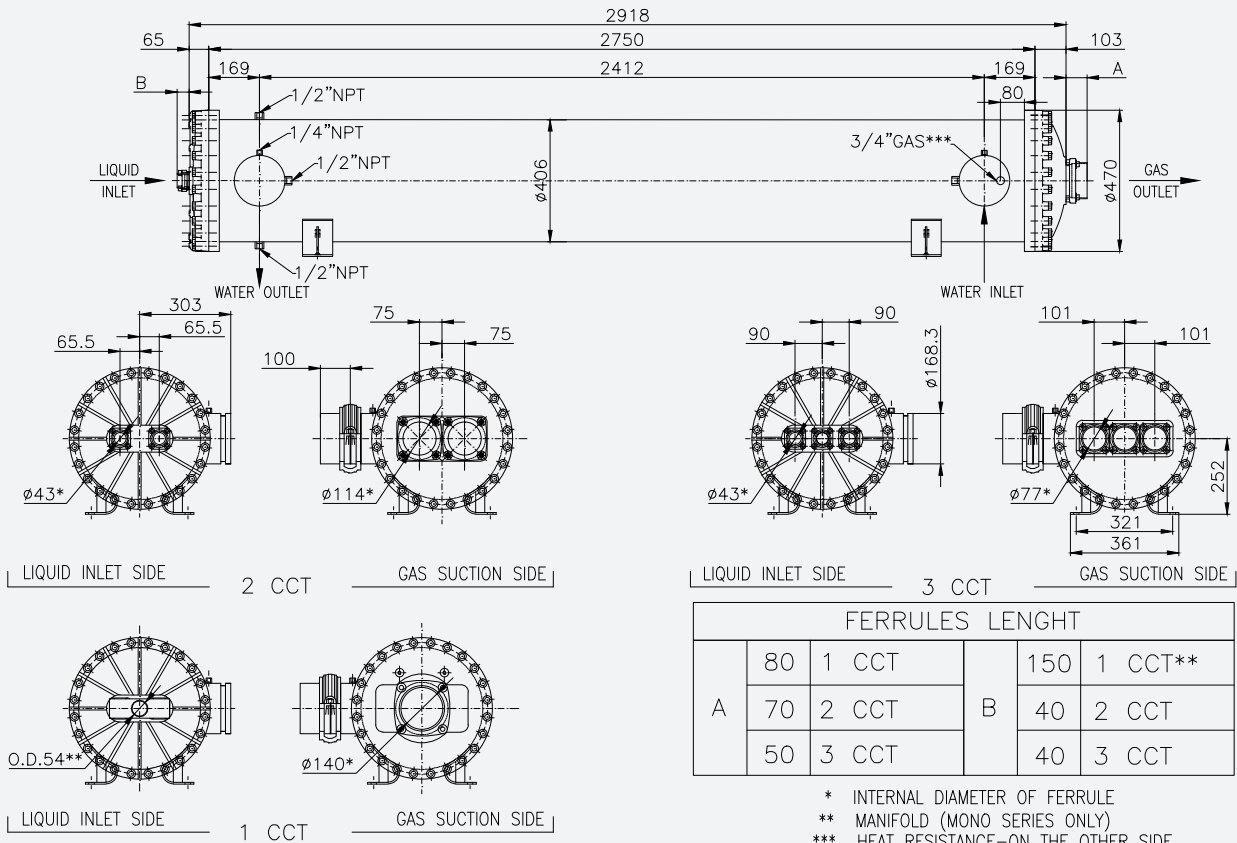
Data valid for: suction temperature 2°C with water IN/OUT = 12 / 7 °C; superheating = 4K; condensing temperature = 40°C; subcooling = 5K; water side fouling factor = 0.00016 m ² K/W low viscosity (< 60 cSt) with 1% of concentration; water side pressure drop up to 150 kPa					
Model	Total capacity kW	Flow rate m ³ /h	Volume gas dm ³	Volume H ₂ O dm ³	Weight kg
1CC/2 CCT - L= 2175mm					
EV 40210077 N2	525	90,1	45	218	476
EV 40210088 N2	612	105,1	50	212	487
EV 40210099 N2	697	119,6	55	206	497
EV 40211010 N2	784	134,6	61	200	508
EV 40211111 N2	868	149,1	66	194	519
EV 40211212 N2	956	164,1	71	188	530
EV 40211313 N2	1040	178,5	76	183	539
3 CCT - L= 2175mm					
EV 40210444 N2	457	78,5	40	224	464
EV 40210555 N2	564	96,9	47	215	471
EV 40210666 N2	685	117,6	55	206	481
EV 40210777 N2	792	136,0	63	198	490
EV 40210888 N2	905	155,4	70	189	500

* Please contact technical dept. at PROVIDES S.r.l. for info



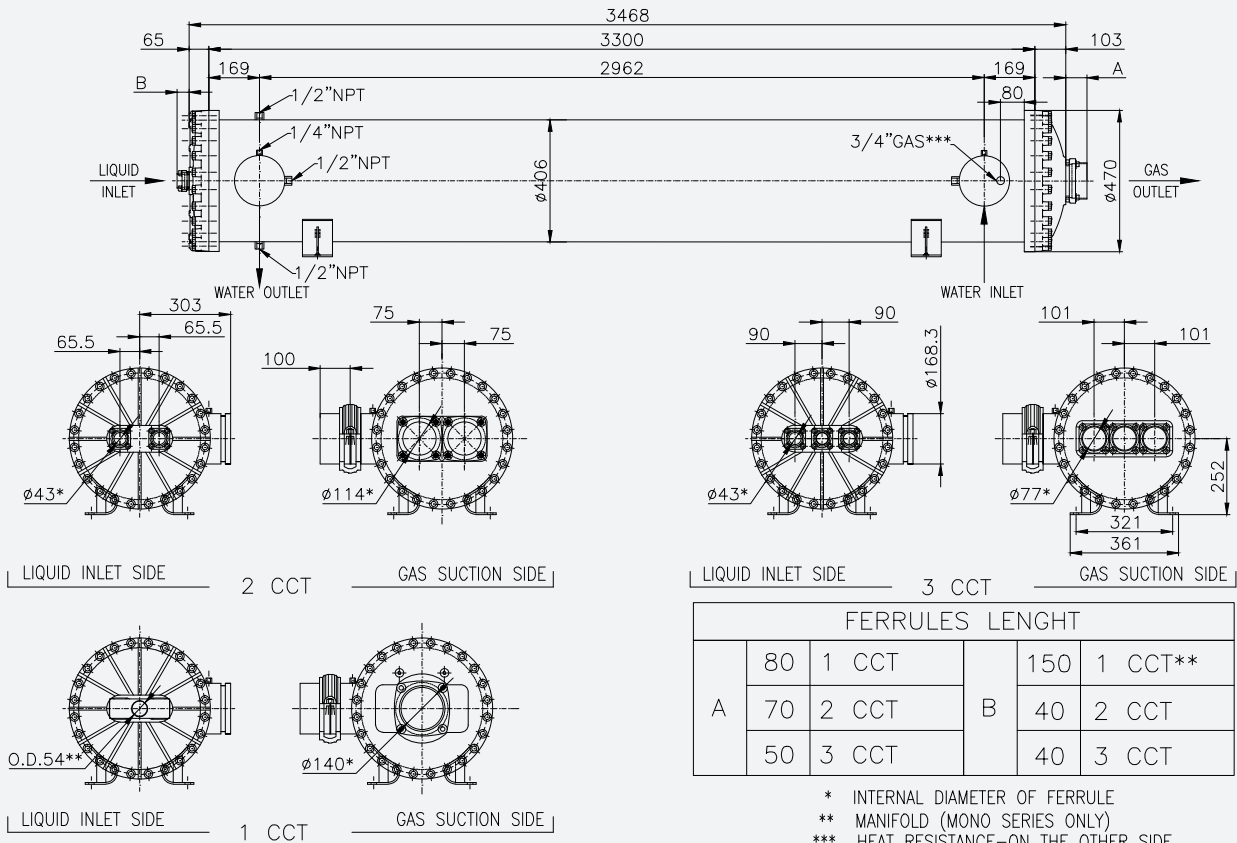
Data valid for: suction temperature 2°C with water IN/OUT = 12 / 7 °C; superheating = 4K; condensing temperature = 40°C; subcooling = 5K; water side fouling factor = 0.000016 m²K/W low viscosity (< 60 cSt) with 1% of concentration; water side pressure drop up to 150 kPa					
Model	Total capacity kW	Flow rate m³/h	Volume gas dm³	Volume H ₂ O dm³	Weight kg
1CC/2 CCT - L= 2750mm					
EV 40270077 N2	689	118,2	54	277	516
EV 40270088 N2	795	136,4	61	270	526
EV 40270099 N2	897	154,0	67	262	535
EV 40271010 N2	1003	172,3	74	255	543
EV 40271111 N2	1106	189,8	80	247	553
EV 40271212 N2	1212	208,1	87	240	562
EV 40271313 N2	1315	225,7	93	232	571
3 CCT - L= 2750mm					
EV 40270444 N2	585	100,5	48	285	507
EV 40270555 N2	728	124,9	57	274	521
EV 40270666 N2	888	152,5	68	262	535
EV 40270777 N2	1031	176,9	77	251	547
EV 40270888 N2	1180	202,6	86	240	559

* Please contact technical dept. at PROVIDES S.r.l. for info



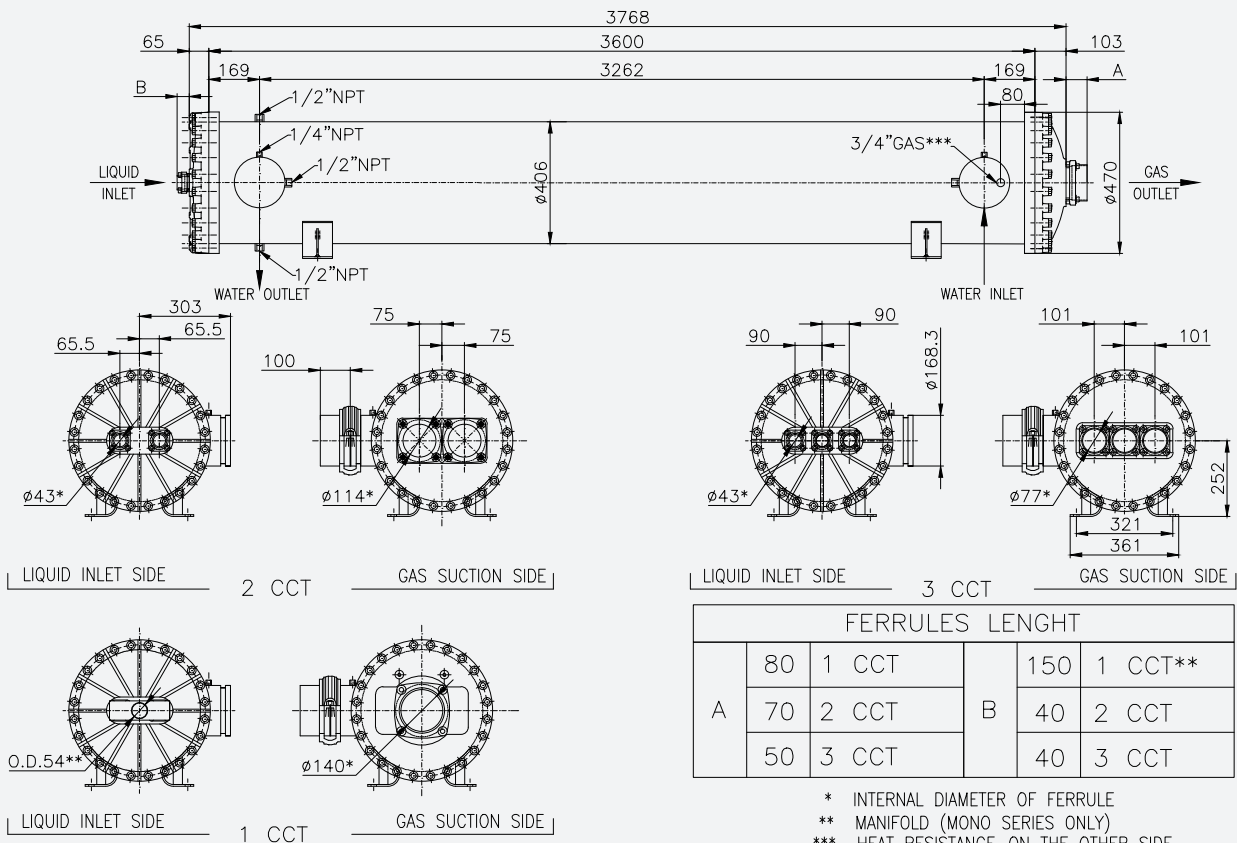
Data valid for: suction temperature 2°C with water IN/OUT = 12 / 7 °C; superheating = 4K; condensing temperature = 40°C; subcooling = 5K; water side fouling factor = 0.000016 m²K/W low viscosity (< 60 cSt) with 1% of concentration; water side pressure drop up to 150 kPa					
Model	Total capacity kW	Flow rate m³/h	Volume gas dm³	Volume H ₂ O dm³	Weight kg
1CC/2 CCT - L= 3300mm					
EV 40330077 N2	702	120,5	63	334	563
EV 40330088 N2	812	139,4	71	325	575
EV 40330099 N2	919	157,7	79	316	587
EV 40331010 N2	1029	176,7	87	307	597
EV 40331111 N2	1136	195,0	94	298	609
EV 40331212 N2	1246	214,0	102	289	620
EV 40331313 N2	1353	232,3	110	280	631
3 CCT - L= 3300mm					
EV 40330444 N2	612	105,1	56	343	552
EV 40330555 N2	756	129,7	67	330	569
EV 40330666 N2	918	157,5	79	315	586
EV 40330777 N2	1061	182,2	90	303	601
EV 40330888 N2	1212	208,1	102	289	617

* Please contact technical dept. at PROVIDES S.r.l. for info



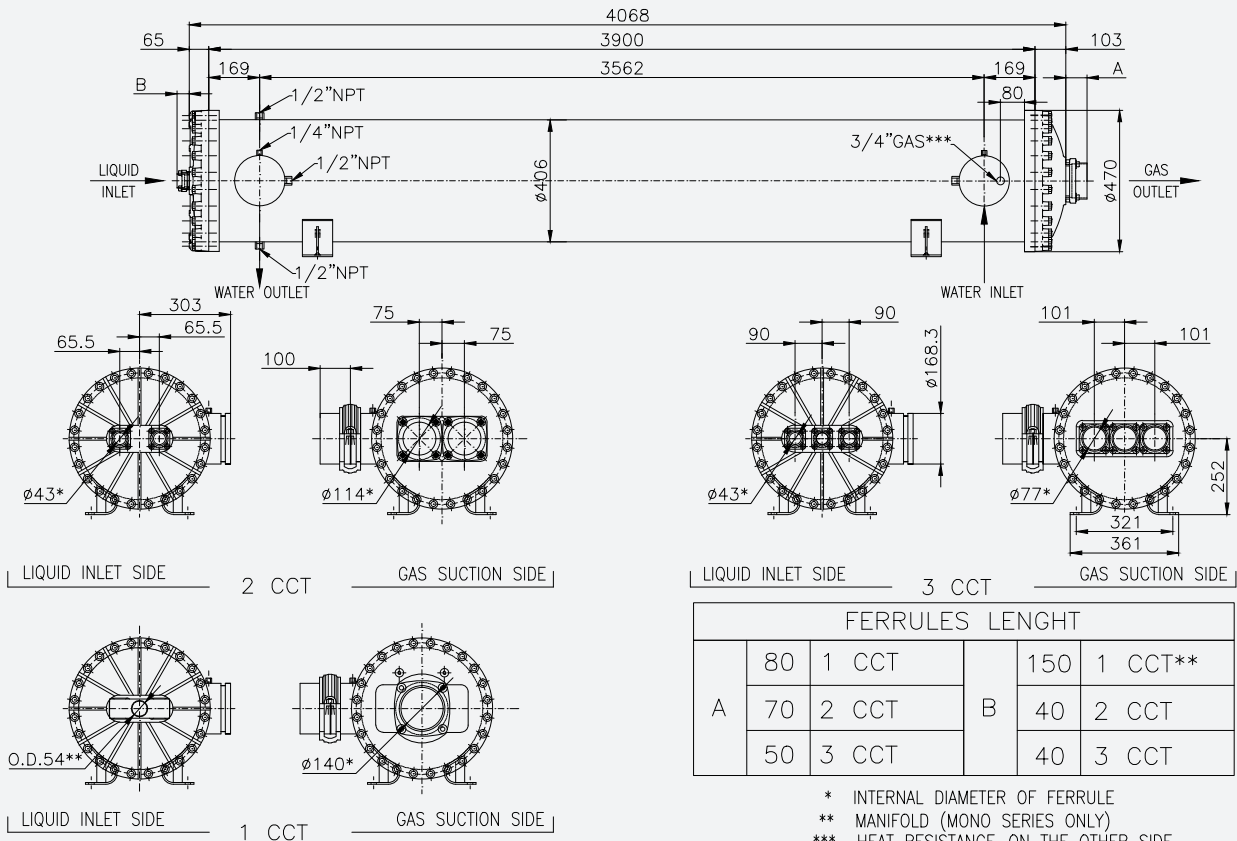
Data valid for: suction temperature 2°C with water IN/OUT = 12 / 7 °C; superheating = 4K; condensing temperature = 40°C; subcooling = 5K; water side fouling factor = 0.000016 m²K/W low viscosity (< 60 cSt) with 1% of concentration; water side pressure drop up to 150 kPa					
Model	Total capacity kW	Flow rate m³/h	Volume gas dm³	Volume H ₂ O dm³	Weight kg
1CC/2 CCT - L= 3600mm					
EV 40360077 N2	*	*	68	365	589
EV 40360088 N2	*	*	77	355	601
EV 40360099 N2	*	*	85	345	614
EV 40361010 N2	*	*	94	335	626
EV 40361111 N2	*	*	102	325	638
EV 40361212 N2	*	*	111	315	651
EV 40361313 N2	*	*	119	306	663
3 CCT - L= 3600mm					
EV 40360444 N2	*	*	60	374	576
EV 40360555 N2	*	*	72	360	594
EV 40360666 N2	*	*	85	345	614
EV 40360777 N2	*	*	97	331	630
EV 40360888 N2	*	*	110	316	648

* Please contact technical dept. at PROVIDES S.r.l. for info



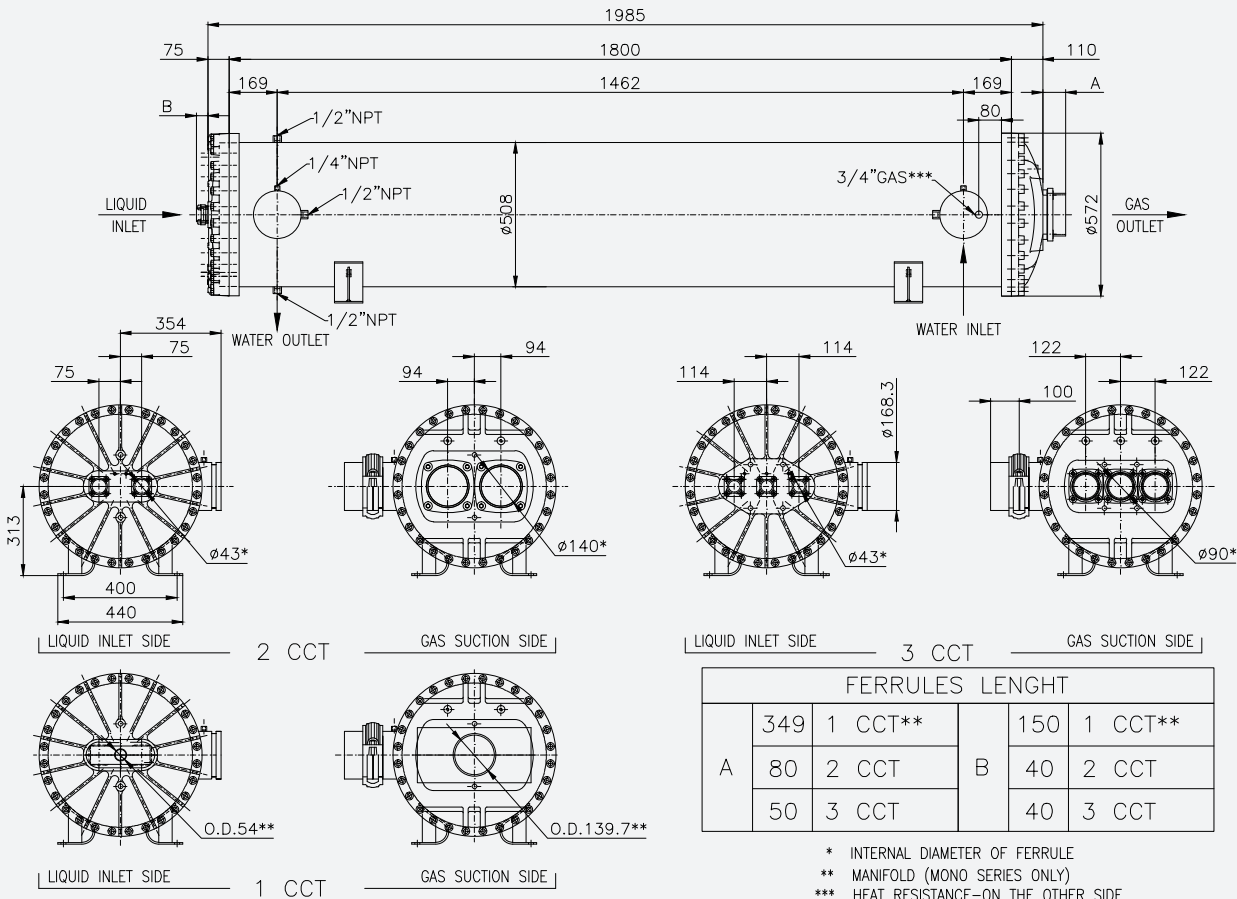
Data valid for: suction temperature 2°C with water IN/OUT = 12 / 7 °C; superheating = 4K; condensing temperature = 40°C; subcooling = 5K; water side fouling factor = 0.000016 m ² K/W low viscosity (< 60 cSt) with 1% of concentration; water side pressure drop up to 150 kPa					
Model	Total capacity kW	Flow rate m ³ /h	Volume gas dm ³	Volume H ₂ O dm ³	Weight kg
1CC/2 CCT - L= 3900mm					
EV 40390077 N2	*	*	73	395	614
EV 40390088 N2	*	*	82	385	627
EV 40390099 N2	*	*	91	374	642
EV 40391010 N2	*	*	101	363	654
EV 40391111 N2	*	*	110	353	668
EV 40391212 N2	*	*	119	342	682
EV 40391313 N2	*	*	128	332	695
3 CCT - L= 3900mm					
EV 40390444 N2	*	*	64	406	600
EV 40390555 N2	*	*	77	391	620
EV 40390666 N2	*	*	92	374	641
EV 40390777 N2	*	*	105	359	659
EV 40390888 N2	*	*	118	343	679

* Please contact technical dept. at PROVIDES S.r.l. for info



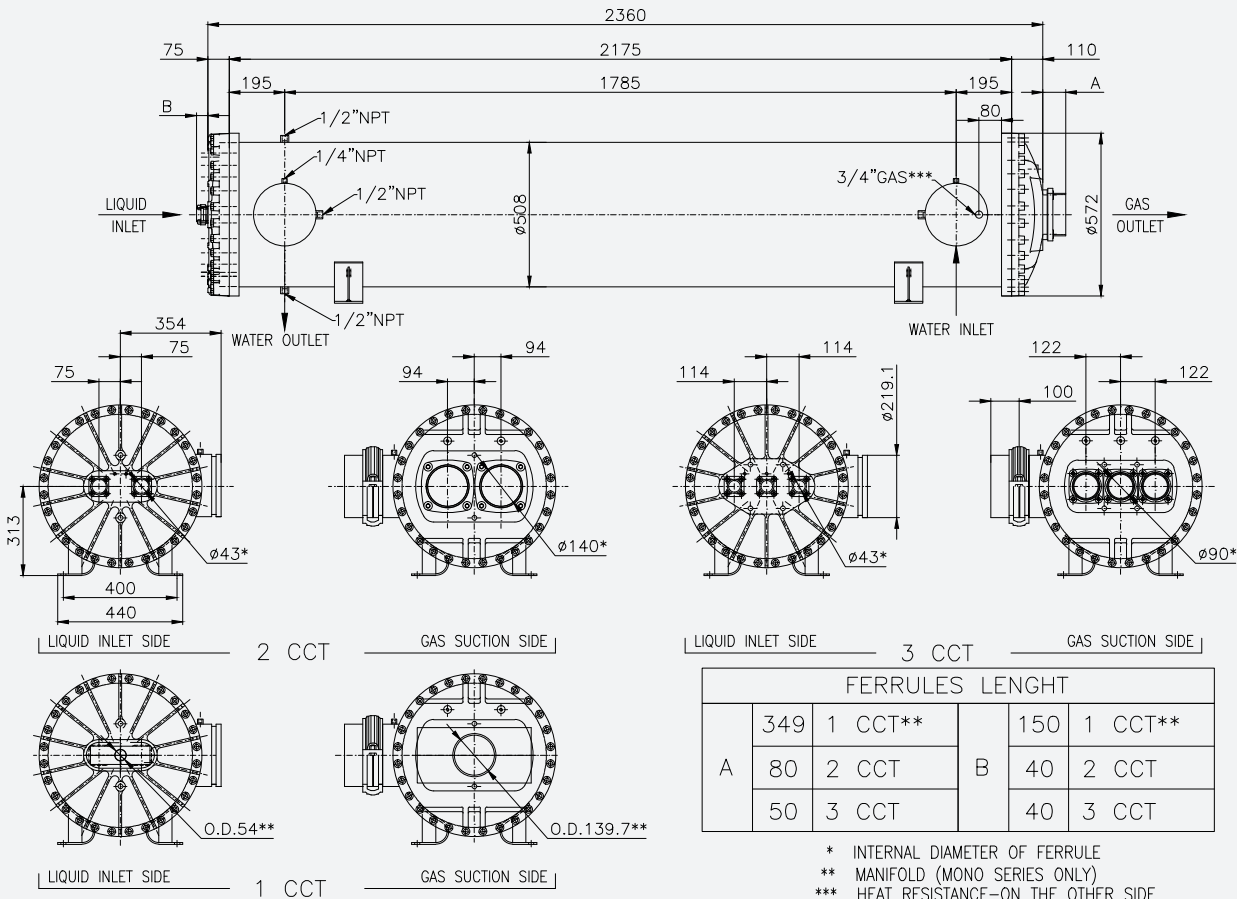
Data valid for: suction temperature 2°C with water IN/OUT = 12 / 7 °C; superheating = 4K; condensing temperature = 40°C; subcooling = 5K; water side fouling factor = 0.000016 m ² K/W low viscosity (< 60 cSt) with 1% of concentration; water side pressure drop up to 150 kPa					
Model	Total capacity kW	Flow rate m ³ /h	Volume gas dm ³	Volume H ₂ O dm ³	Weight kg
1CC/2 CCT - L= 1800mm					
EV 50181010 N2	670	115,0	59	278	582
EV 50181111 N2	744	127,8	64	273	590
EV 50181212 N2	821	141,0	69	267	597
EV 50181313 N2	896	153,8	73	262	605
EV 50181414 N2	973	167,0	79	256	613
EV 50181515 N2	1047	179,7	84	250	619
EV 50181616 N2	1124	192,9	88	245	627
EV 50181717 N2	1198	205,7	93	239	635
3 CCT - L= 1800mm					
EV 50180666 N2	626	107,5	54	284	624
EV 50180777 N2	734	125,9	61	276	635
EV 50180888 N2	848	145,6	69	267	642
EV 50180999 N2	956	164,0	76	259	647
EV 5018101010 N2	1054	180,9	83	251	653

* Please contact technical dept. at PROVIDES S.r.l. for info



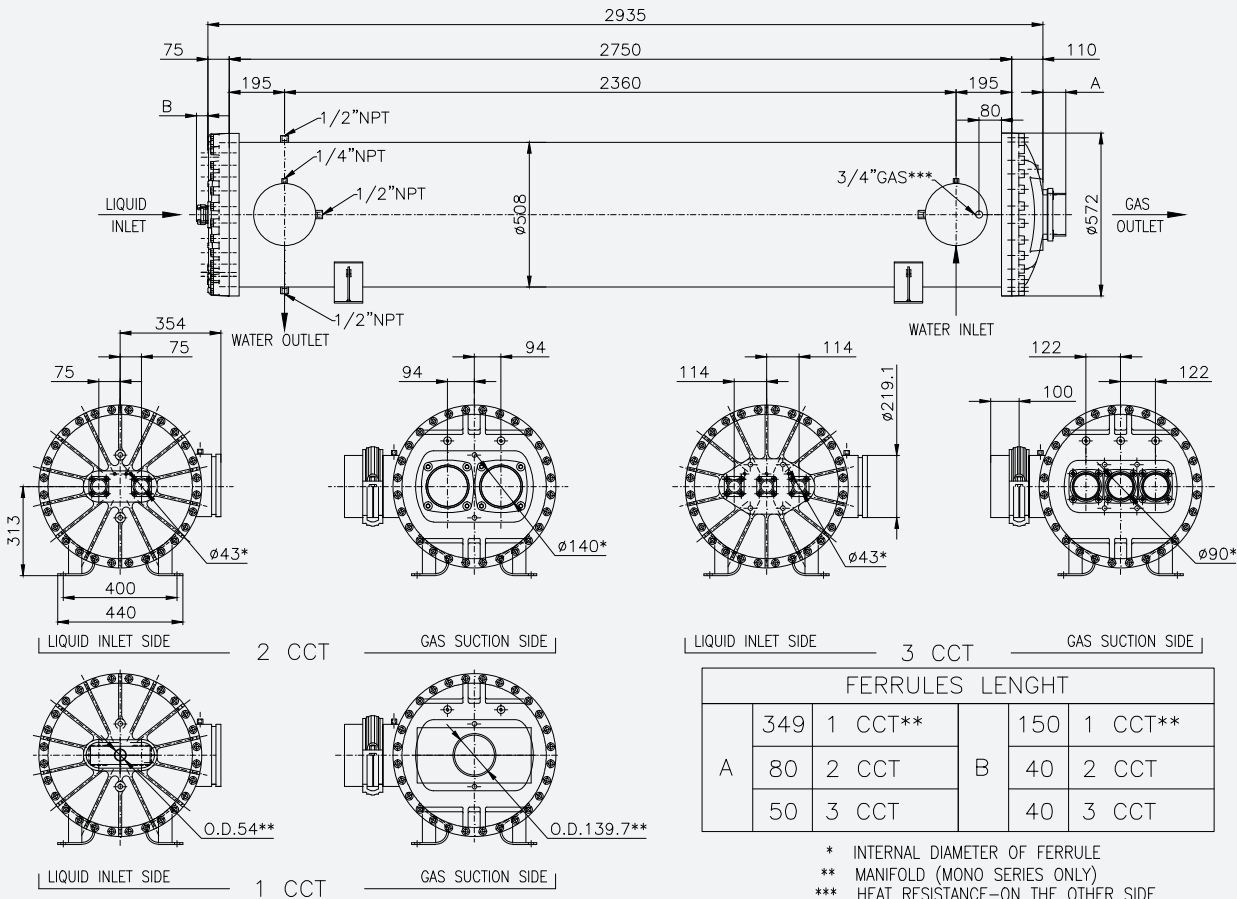
Data valid for: suction temperature 2°C with water IN/OUT = 12 / 7 °C; superheating = 4K; condensing temperature = 40°C; subcooling = 5K; water side fouling factor = 0.000016 m ² K/W low viscosity (< 60 cSt) with 1% of concentration; water side pressure drop up to 150 kPa					
Model	Total capacity kW	Flow rate m ³ /h	Volume gas dm ³	Volume H ₂ O dm ³	Weight kg
1CC/2 CCT - L= 2175mm					
EV 50211010 N2	922	158,3	69	342	652
EV 50211111 N2	1007	172,8	75	335	662
EV 50211212 N2	1094	187,8	82	328	671
EV 50211313 N2	1179	202,4	87	322	681
EV 50211414 N2	1266	217,4	93	314	690
EV 50211515 N2	1351	232,0	99	307	698
EV 50211616 N2	1439	247,0	104	301	707
EV 50211717 N2	1524	261,5	110	294	717
3 CCT - L= 2175mm					
EV 50210666 N2	802	137,7	63	349	692
EV 50210777 N2	939	161,2	72	339	706
EV 50210888 N2	1085	186,3	81	328	716
EV 50210999 N2	1222	209,9	90	318	723
EV 5021101010 N2	1348	231,4	98	309	732

* Please contact technical dept. at PROVIDES S.r.l. for info



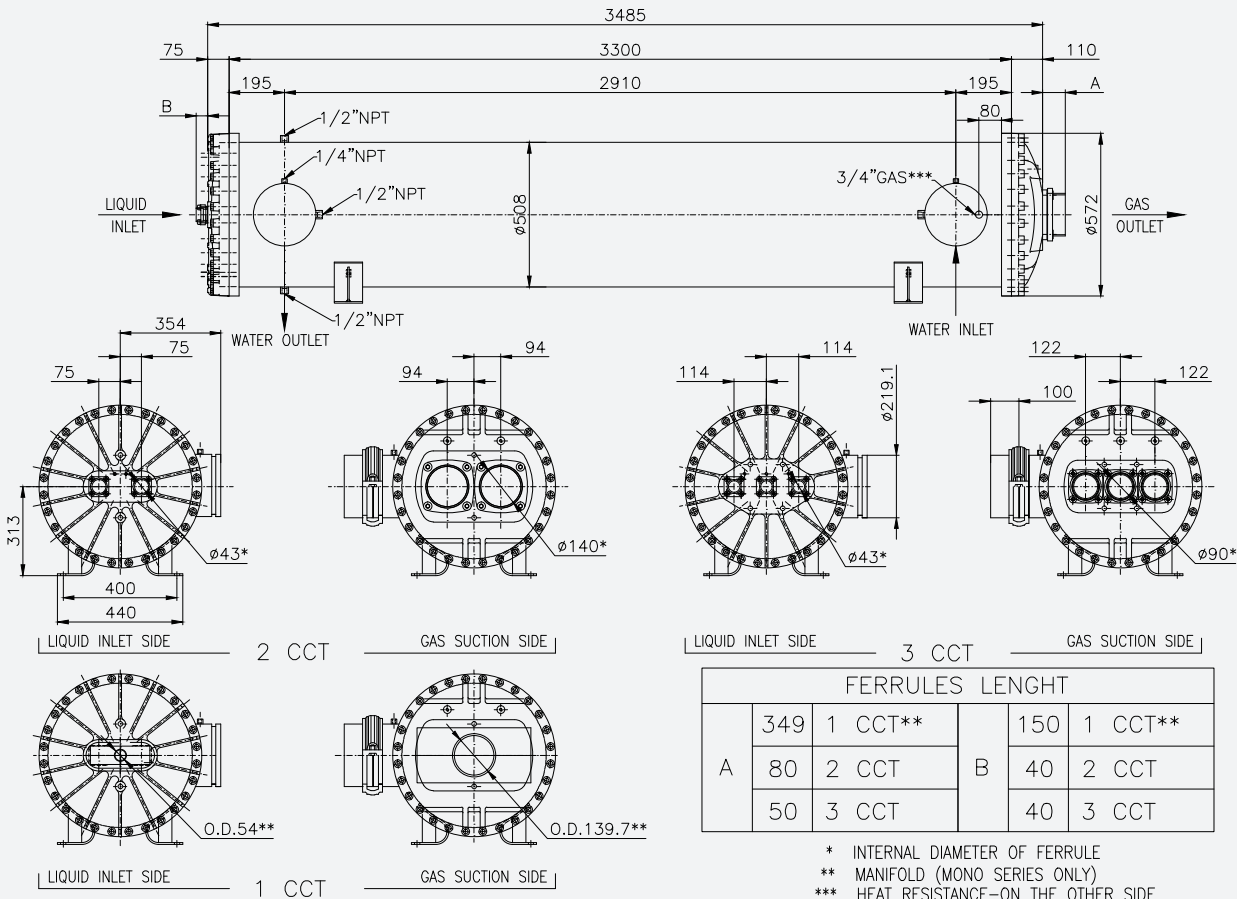
Data valid for: suction temperature 2°C with water IN/OUT = 12 / 7 °C; superheating = 4K; condensing temperature = 40°C; subcooling = 5K; water side fouling factor = 0.000016 m ² K/W low viscosity (< 60 cSt) with 1% of concentration; water side pressure drop up to 150 kPa					
Model	Total capacity kW	Flow rate m ³ /h	Volume gas dm ³	Volume H ₂ O dm ³	Weight kg
1CC/2 CCT - L= 2750mm					
EV 50271010 N2	1148	197,1	85	434	749
EV 50271111 N2	1255	215,5	93	425	760
EV 50271212 N2	1366	234,5	101	416	771
EV 50271313 N2	1474	253,0	107	409	782
EV 50271414 N2	1584	272,0	115	399	792
EV 50271515 N2	1692	290,4	123	390	803
EV 50271616 N2	1802	309,4	129	383	814
EV 50271717 N2	1910	327,8	137	374	825
3 CCT - L= 2750mm					
EV 50270666 N2	1030	176,7	77	443	739
EV 50270777 N2	1207	207,1	88	430	756
EV 50270888 N2	1395	239,4	100	417	770
EV 50270999 N2	1572	269,8	111	404	782
EV 5027101010 N2	1734	297,6	121	392	794

* Please contact technical dept. at PROVIDES S.r.l. for info



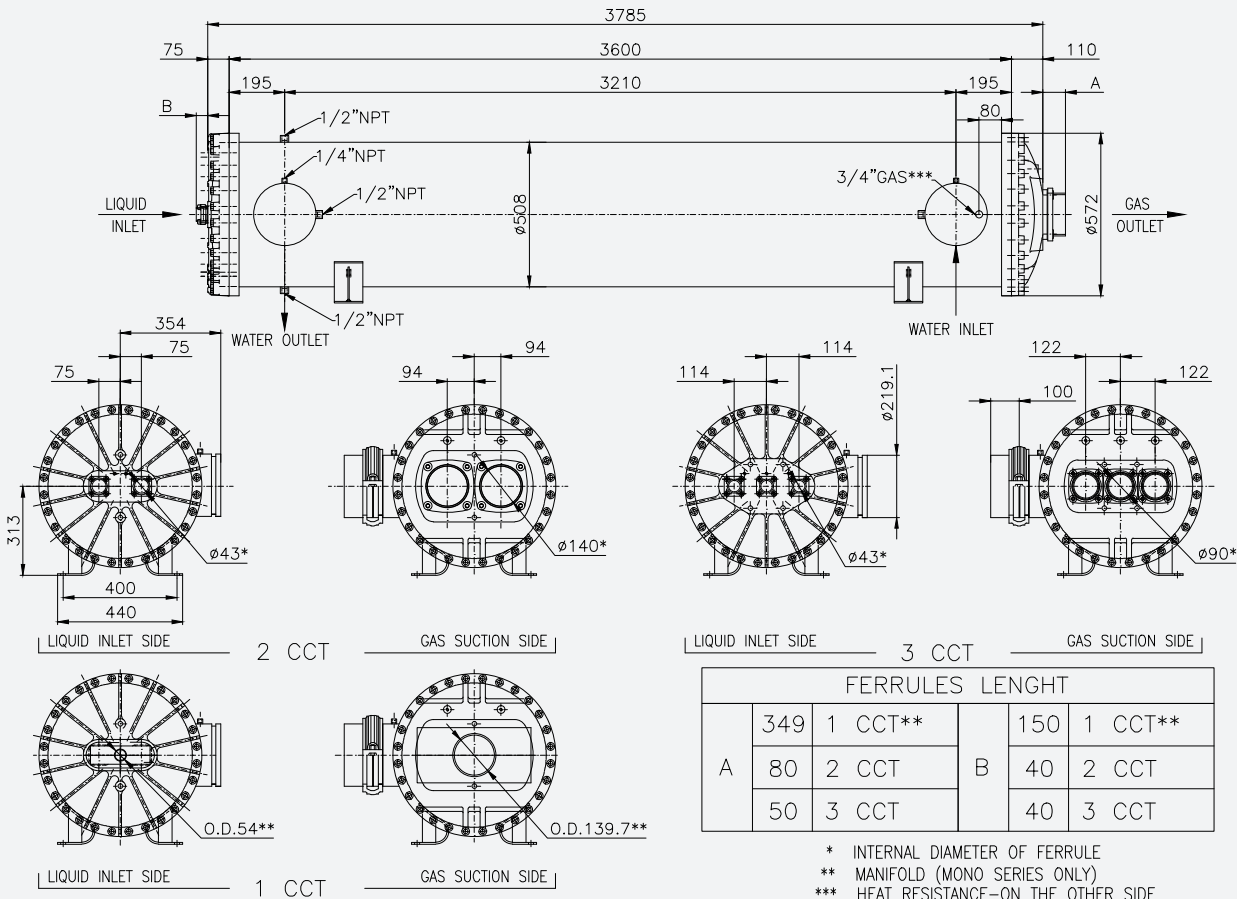
Data valid for: suction temperature 2°C with water IN/OUT = 12 / 7 °C; superheating = 4K; condensing temperature = 40°C; subcooling = 5K; water side fouling factor = 0.000016 m ² K/W low viscosity (< 60 cSt) with 1% of concentration; water side pressure drop up to 150 kPa					
Model	Total capacity kW	Flow rate m ³ /h	Volume gas dm ³	Volume H ₂ O dm ³	Weight kg
1CC/2 CCT - L= 3300mm					
EV 50331010 N2	1211	207,8	100	522	819
EV 50331111 N2	1312	225,2	109	512	832
EV 50331212 N2	1416	243,0	119	501	845
EV 50331313 N2	1517	260,4	127	492	859
EV 50331414 N2	1621	278,2	137	481	871
EV 50331515 N2	1722	295,5	146	470	885
EV 50331616 N2	1826	313,4	153	461	899
EV 50331717 N2	1927	330,7	163	451	912
3 CCT - L= 3300mm					
EV 50330666 N2	1043	179,0	91	534	805
EV 50330777 N2	1220	209,4	104	518	827
EV 50330888 N2	1409	241,8	118	502	844
EV 50330999 N2	1586	272,2	131	487	860
EV 5033101010 N2	1748	300,0	144	472	877

* Please contact technical dept. at PROVIDES S.r.l. for info



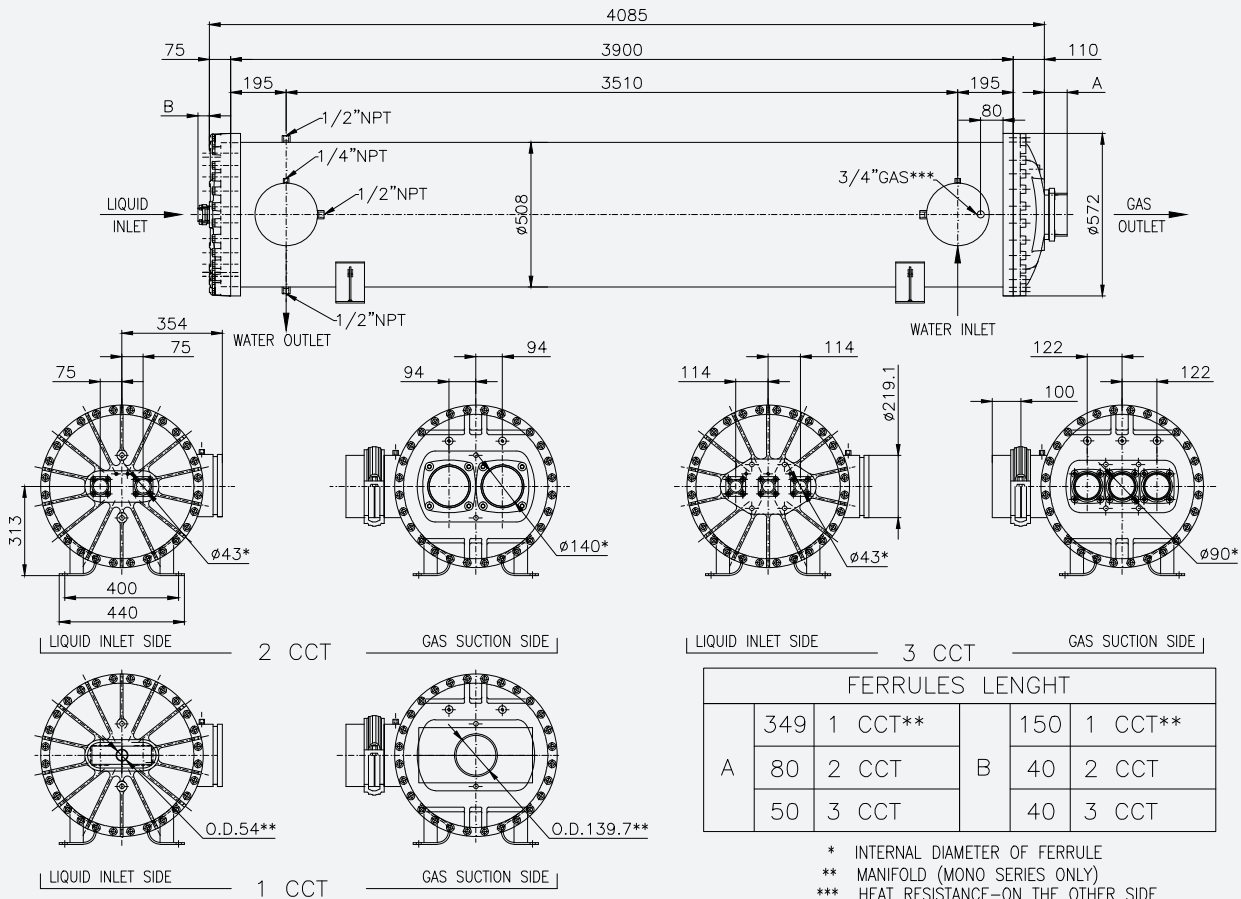
Data valid for: suction temperature 2°C with water IN/OUT = 12 / 7 °C; superheating = 4K; condensing temperature = 40°C; subcooling = 5K; water side fouling factor = 0.000016 m ² K/W low viscosity (< 60 cSt) with 1% of concentration; water side pressure drop up to 150 kPa					
Model	Total capacity kW	Flow rate m ³ /h	Volume gas dm ³	Volume H ₂ O dm ³	Weight kg
1CC/2 CCT - L= 3600mm					
EV 50361010 N2	*	*	109	571	856
EV 50361111 N2	*	*	119	559	871
EV 50361212 N2	*	*	129	548	886
EV 50361313 N2	*	*	137	538	900
EV 50361414 N2	*	*	148	525	914
EV 50361515 N2	*	*	158	514	930
EV 50361616 N2	*	*	167	504	945
EV 50361717 N2	*	*	176	492	960
3 CCT - L= 3600mm					
EV 50360666 N2	*	*	98	583	842
EV 50360777 N2	*	*	113	566	865
EV 50360888 N2	*	*	128	548	885
EV 50360999 N2	*	*	143	532	902
EV 5036101010 N2	*	*	156	516	921

* Please contact technical dept. at PROVIDES S.r.l. for info



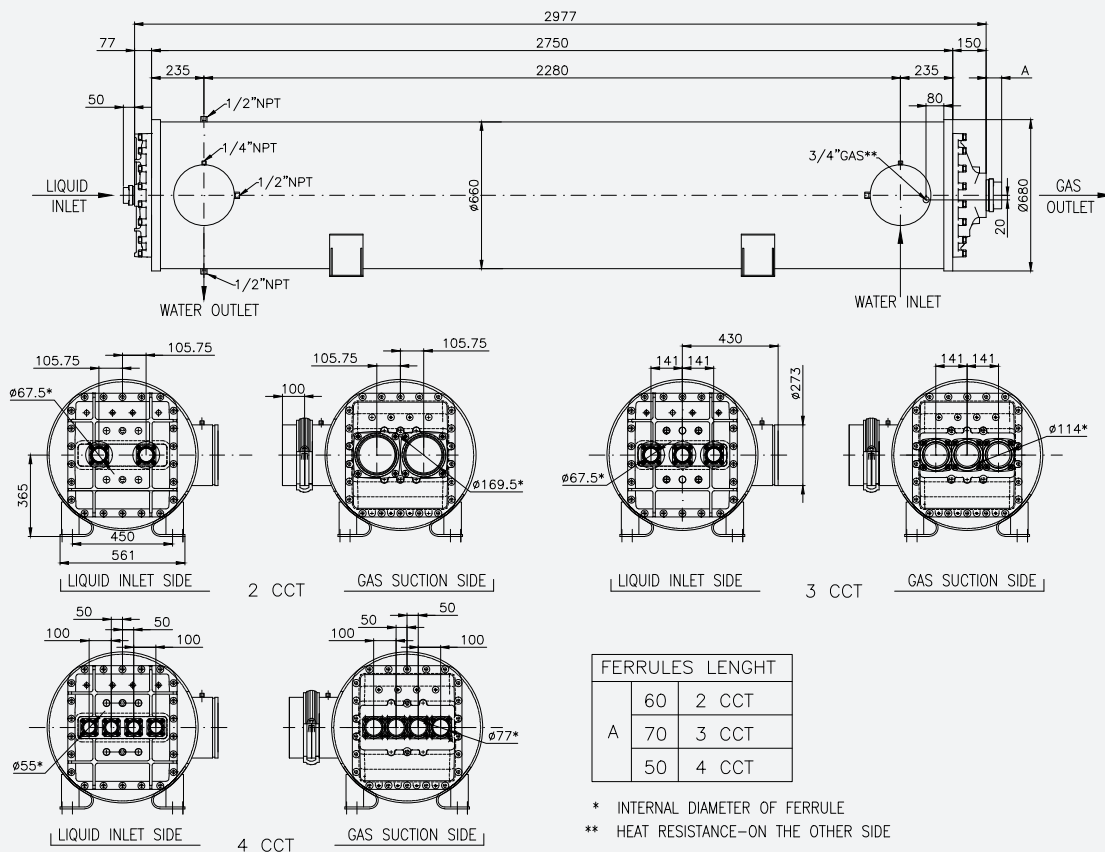
Data valid for: suction temperature 2°C with water IN/OUT = 12 / 7 °C; superheating = 4K; condensing temperature = 40°C; subcooling = 5K; water side fouling factor = 0.000016 m ² K/W low viscosity (< 60 cSt) with 1% of concentration; water side pressure drop up to 150 kPa					
Model	Total capacity kW	Flow rate m ³ /h	Volume gas dm ³	Volume H ₂ O dm ³	Weight kg
1CC/2 CCT - L= 3900mm					
EV 50391010 N2	*	*	117	619	894
EV 50391111 N2	*	*	128	607	910
EV 50391212 N2	*	*	139	594	926
EV 50391313 N2	*	*	148	583	942
EV 50391414 N2	*	*	160	570	958
EV 50391515 N2	*	*	170	557	975
EV 50391616 N2	*	*	180	546	991
EV 50391717 N2	*	*	190	534	1007
3 CCT - L= 3900mm					
EV 50390666 N2	*	*	106	632	878
EV 50390777 N2	*	*	121	614	903
EV 50390888 N2	*	*	138	595	925
EV 50390999 N2	*	*	154	577	945
EV 5039101010 N2	*	*	168	560	966

* Please contact technical dept. at PROVIDES S.r.l. for info



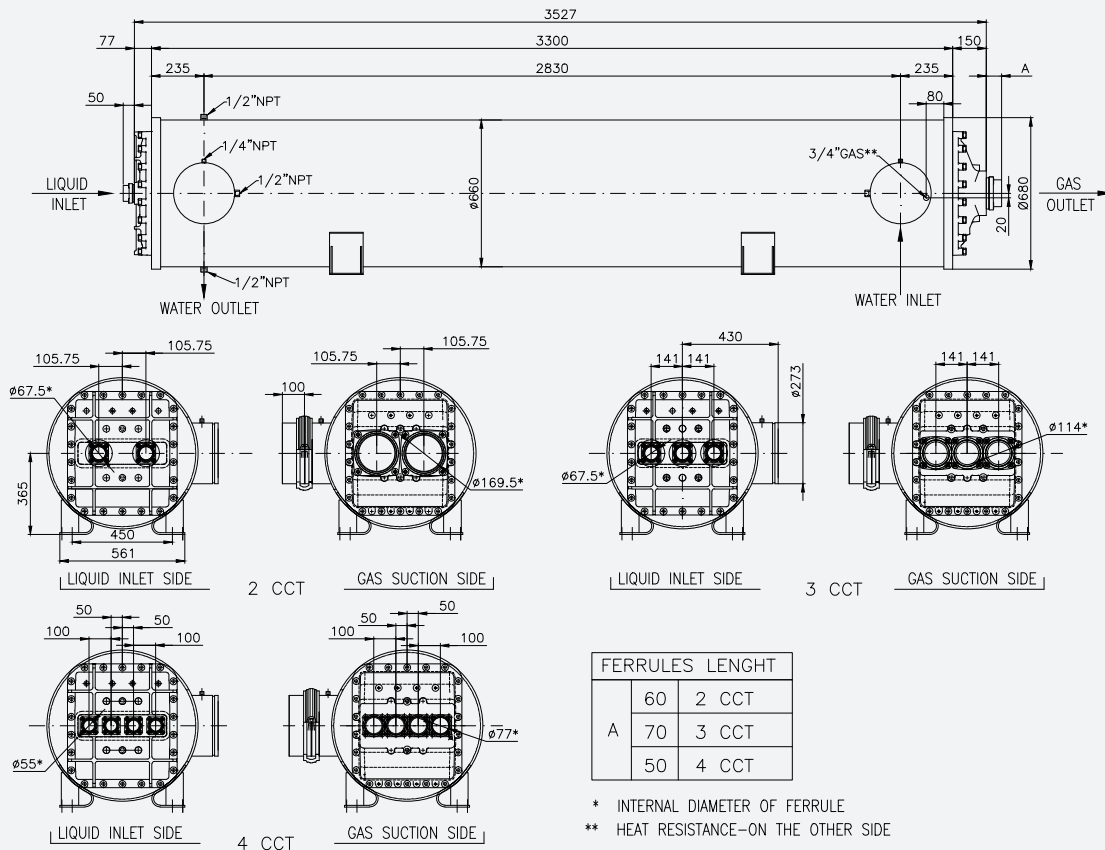
Data valid for: suction temperature 2°C with water IN/OUT = 12 / 7 °C; superheating = 4K; condensing temperature = 40°C; subcooling = 5K; water side fouling factor = 0.00016 m ² K/W low viscosity (< 60 cSt) with 1% of concentration; water side pressure drop up to 150 kPa					
Model	Total capacity kW	Flow rate m ³ /h	Volume gas dm ³	Volume H ₂ O dm ³	Weight kg
2 CCT - L= 2750mm					
EV 66271313 N2	1770	303,9	136	727	1017
EV 66271414 N2	1886	323,8	146	716	1030
EV 66271515 N2	2006	344,3	156	704	1043
EV 66271616 N2	2122	364,3	166	693	1055
EV 66271717 N2	2241	384,7	175	682	1068
EV 66271818 N2	2357	404,7	185	671	1080
EV 66271919 N2	2477	425,1	195	659	1093
EV 66272020 N2	2593	445,1	205	648	1106
3 CCT - L= 2750mm					
EV 66270777 N2	1371	235,4	113	754	1003
EV 66270888 N2	1576	270,6	128	737	1022
EV 66270999 N2	1776	304,9	142	721	1041
EV 6627101010 N2	1980	339,8	156	704	1060
EV 6627111111 N2	2175	373,3	171	688	1078
EV 6627121212 N2	2373	407,4	185	671	1097
EV 6627131313 N2	2554	438,4	198	656	1113
EV 6627141414 N2	2725	467,7	210	642	1129

* Please contact technical dept. at PROVIDES S.r.l. for info



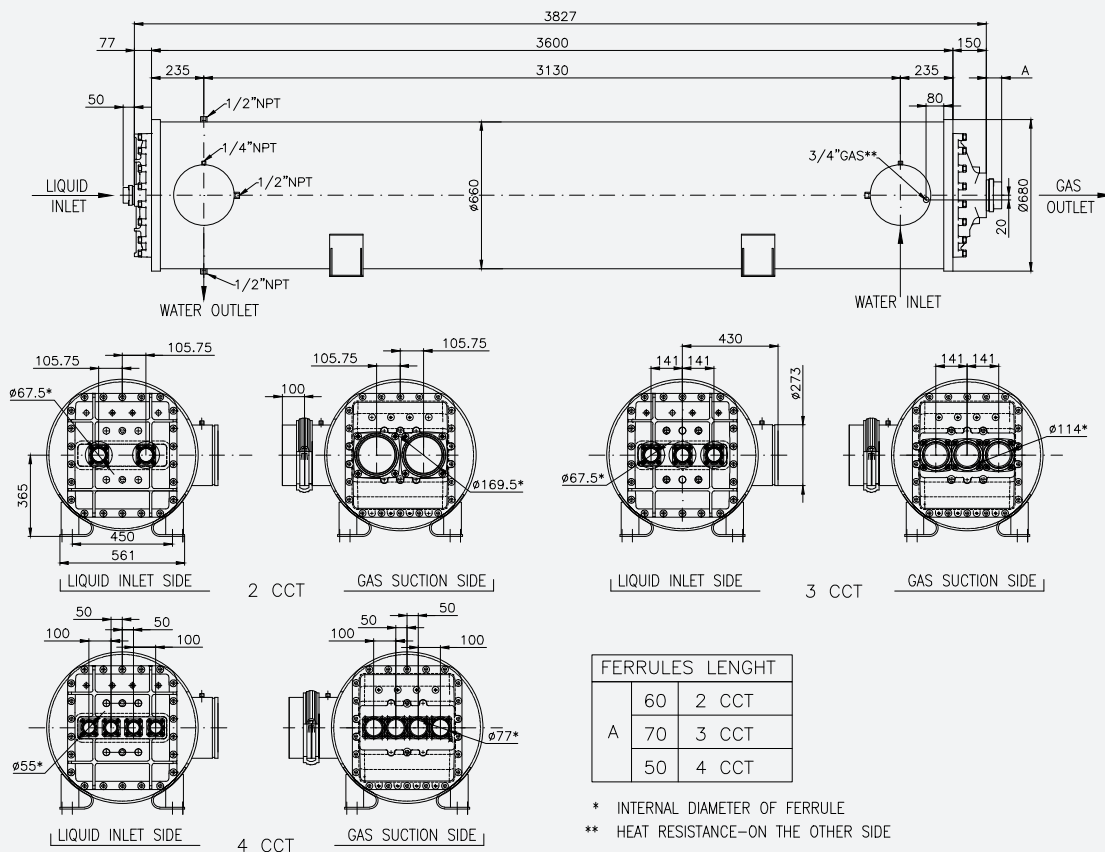
Data valid for: suction temperature 2°C with water IN/OUT = 12 / 7 °C; superheating = 4K; condensing temperature = 40°C; subcooling = 5K; water side fouling factor = 0.00016 m ² K/W low viscosity (< 60 cSt) with 1% of concentration; water side pressure drop up to 150 kPa					
Model	Total capacity kW	Flow rate m ³ /h	Volume gas dm ³	Volume H ₂ O dm ³	Weight kg
2 CCT - L= 3300mm					
EV 66331313 N2	1927	330,7	161	878	1144
EV 66331414 N2	2058	353,4	173	865	1160
EV 66331515 N2	2193	376,5	185	851	1176
EV 66331616 N2	2325	399,2	196	838	1192
EV 66331717 N2	2460	422,3	208	824	1208
EV 66331818 N2	2592	445,0	220	811	1223
EV 66331919 N2	2727	468,2	232	797	1239
EV 66332020 N2	2859	490,8	243	783	1255
3 CCT - L= 3300mm					
EV 66330777 N2	1499	257,3	134	910	1122
EV 66330888 N2	1725	296,2	152	890	1146
EV 66330999 N2	1947	334,2	168	871	1169
EV 6633101010 N2	2172	372,8	185	850	1193
EV 6633111111 N2	2387	409,8	202	831	1216
EV 6633121212 N2	2607	447,5	220	811	1239
EV 6633131313 N2	2807	481,8	235	793	1261
EV 6633141414 N2	2996	514,3	250	776	1281

* Please contact technical dept. at PROVIDES S.r.l. for info



Data valid for: suction temperature 2°C with water IN/OUT = 12 / 7 °C; superheating = 4K; condensing temperature = 40°C; subcooling = 5K; water side fouling factor = 0.000016 m ² K/W low viscosity (< 60 cSt) with 1% of concentration; water side pressure drop up to 150 kPa					
Model	Total capacity kW	Flow rate m ³ /h	Volume gas dm ³	Volume H ₂ O dm ³	Weight kg
2 CCT - L= 3600mm					
EV 66361313 N2	*	*	175	961	1214
EV 66361414 N2	*	*	188	946	1231
EV 66361515 N2	*	*	201	931	1249
EV 66361616 N2	*	*	213	917	1266
EV 66361717 N2	*	*	226	902	1284
EV 66361818 N2	*	*	239	887	1301
EV 66361919 N2	*	*	252	872	1319
EV 66362020 N2	*	*	264	857	1337
3 CCT - L= 3600mm					
EV 66360777 N2	*	*	145	996	1187
EV 66360888 N2	*	*	164	973	1214
EV 66360999 N2	*	*	182	953	1240
EV 6636101010 N2	*	*	201	930	1266
EV 6636111111 N2	*	*	220	909	1292
EV 6636121212 N2	*	*	239	887	1317
EV 6636131313 N2	*	*	256	868	1341
EV 6636141414 N2	*	*	272	849	1363

* Please contact technical dept. at PROVIDES S.r.l. for info



Data valid for: suction temperature 2°C with water IN/OUT = 12 / 7 °C; superheating = 4K; condensing temperature = 40°C; subcooling = 5K; water side fouling factor = 0.00016 m ² K/W low viscosity (< 60 cSt) with 1% of concentration; water side pressure drop up to 150 kPa					
Model	Total capacity kW	Flow rate m ³ /h	Volume gas dm ³	Volume H ₂ O dm ³	Weight kg
2 CCT - L= 3900mm					
EV 66391313 N2	*	*	189	1043	1283
EV 66391414 N2	*	*	203	1027	1302
EV 66391515 N2	*	*	217	1011	1322
EV 66391616 N2	*	*	230	995	1341
EV 66391717 N2	*	*	244	979	1360
EV 66391818 N2	*	*	258	963	1380
EV 66391919 N2	*	*	272	947	1399
EV 66392020 N2	*	*	286	931	1418
3 CCT - L= 3900mm					
EV 66390777 N2	*	*	156	1081	1252
EV 66390888 N2	*	*	177	1057	1281
EV 66390999 N2	*	*	196	1035	1310
EV 6639101010 N2	*	*	217	1010	1339
EV 6639111111 N2	*	*	237	987	1367
EV 6639121212 N2	*	*	258	964	1396
EV 6639131313 N2	*	*	276	942	1421
EV 6639141414 N2	*	*	294	922	1446

* Please contact technical dept. at PROVIDES S.r.l. for info

